

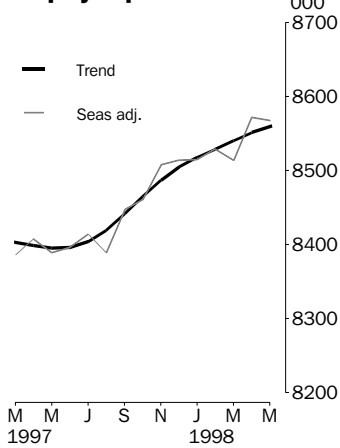


LABOUR FORCE

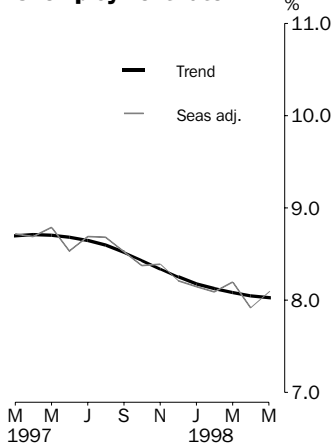
AUSTRALIA
PRELIMINARY

EMBARGO: 11:30AM (CANBERRA TIME) THURS 11 JUNE 1998

Employed persons



Unemployment rate



- For further information about these and related statistics, contact Matthew Paull on 02 6252 6525 or any ABS office shown on the back cover of this publication.

MAY KEY FIGURES

TREND ESTIMATES

	Apr 98	May 98	monthly change
Employed persons ('000)	8 551.1	8 559.4	0.1 %
Unemployed persons ('000)	748.5	746.5	-0.3 %
Unemployment rate (%)	8.0	8.0	0.0 pts
Participation rate (%)	63.1	63.1	0.0 pts

SEASONALLY ADJUSTED

	Apr 98	May 98	monthly change
Employed persons ('000)	8 572.1	8 567.4	-4.7
Unemployed persons ('000)	737.2	753.9	16.7
Unemployment rate (%)	7.9	8.1	0.2 pts
Participation rate (%)	63.2	63.2	0.0 pts

MAY KEY POINTS

TREND ESTIMATES

EMPLOYMENT

- has continued to rise, and was 8,559,400 in May 1998. Over the past year employment has risen by 2.0%.

UNEMPLOYMENT

- continued to fall steadily, and was 746,500 in May 1998.

UNEMPLOYMENT RATE

- remained at 8.0%.

PARTICIPATION RATE

- remained at 63.1%.

SEASONALLY ADJUSTED ESTIMATES

EMPLOYMENT

- fell by 4,700 to 8,567,400. Full-time employment fell by 44,100, partly offset by a rise in part-time employment of 39,300.

UNEMPLOYMENT

- rose by 16,700 to 753,900, with the number of people looking for full-time work rising by 25,600, and the number looking for part-time work falling by 9,000.

UNEMPLOYMENT RATE

- rose by 0.2 percentage points to 8.1%, with the male rate rising by 0.3 percentage points and the female rate remaining steady.
- NSW 7.6% (7.2% last month); Vic. 8.2% (8.4%); Qld 8.4% (8.5%); SA 10.4% (9.4%); WA 6.9% (6.9%); Tas. 10.4% (10.5%).

PARTICIPATION RATE

- remained at 63.2%.

NOTES

FORTHCOMING ISSUES

<i>ISSUE</i>	<i>RELEASE DATE</i>
June 1998	9 July 1998
July 1998	6 August 1998
August 1998	10 September 1998
September 1998	8 October 1998
October 1998	12 November 1998
November 1998	10 December 1998



ROUNDING

Estimates of monthly change shown on page 1 have been calculated using unrounded estimates, and may be different from, but are more accurate than, movements obtained from the rounded estimates. The graphs on page 1 also depict movements calculated from unrounded estimates.



SAMPLING ERRORS

The estimates in this publication are based on a sample survey. Because the entire population is not enumerated, the published estimates and the movements derived from them are subject to sampling variability. Standard errors give a measure of this variability and appear on pages 30 and 31.

The 95% confidence intervals below provide another way of looking at the variability inherent in estimates from sample surveys. The interval bounded by the two limits is the 95% confidence interval. A 95% confidence interval indicates that we are 95% confident that the upper and lower limits enclose the true value of the estimate.

<i>SEASONALLY ADJUSTED DATA SERIES</i>	<i>MOVEMENTS APRIL 1998 TO MAY 1998</i>	
	<i>Monthly change</i>	<i>95% Confidence interval</i>
Total employment	- 4 700	- 44 100 to 34 700
Total unemployment	16 700	900 to 32 500
Unemployment rate	0.2 pts	0.0 pts to 0.4 pts
Participation rate	0.0 pts	- 0.2 pts to 0.2 pts



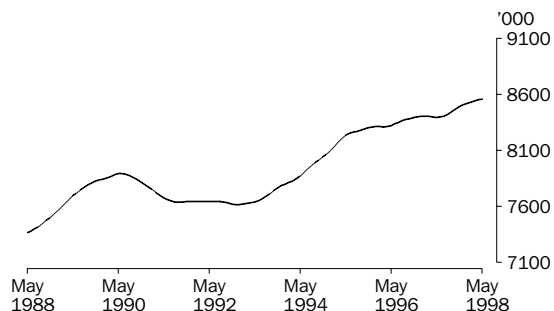
W. McLennan
Australian Statistician



PRINCIPAL LABOUR FORCE SERIES: Trend estimates

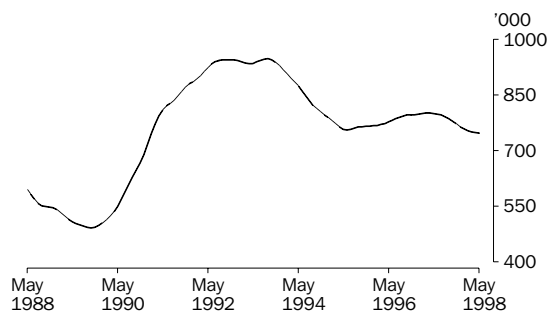
EMPLOYED PERSONS

The trend estimate of employed persons rose strongly from 7,616,000 in January 1993, until early 1996. Apart from some small periods of decline in early 1996 and early 1997, the trend continued to rise, but at a slower rate. In recent months the trend estimate has risen more strongly, to 8,559,400 in May 1998.



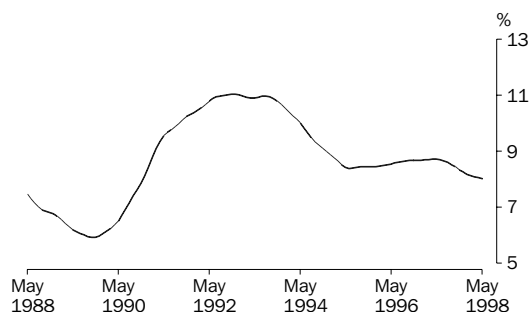
UNEMPLOYED PERSONS

The trend estimate of unemployed persons peaked at 947,800 in September 1993, before falling rapidly to 755,200 in June 1995. The trend then rose slowly for almost two years, reaching 801,400 in April 1997. Since then, the trend has been falling steadily, and was 746,500 in May 1998.



UNEMPLOYMENT RATE

From a high of 11.0% in late 1992, and again in mid 1993, the trend unemployment rate fell rapidly to 8.4% in June 1995. The trend then rose slowly to measure 8.7% between September 1996 and June 1997. Recently, the trend estimate has been falling steadily and was 8.0% in May 1998.

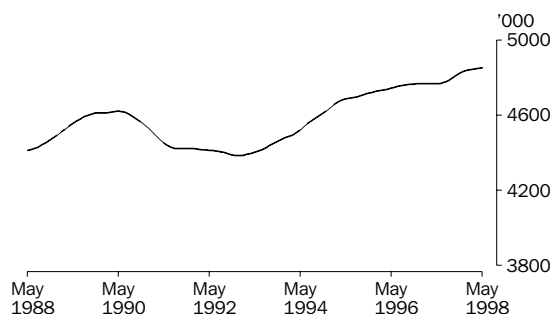


EMPLOYED PERSONS: Trend estimates

EMPLOYED MALES

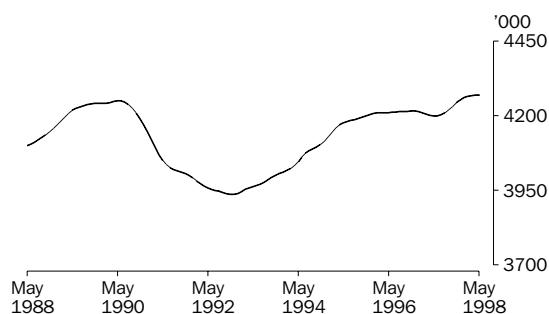
TOTAL

From a low of 4,383,700 in January 1993 the trend estimate of employed males rose strongly until April 1995, when it was 4,680,000. The trend estimate has since continued to rise, but at a slower rate, and was 4,852,800 in May 1998.



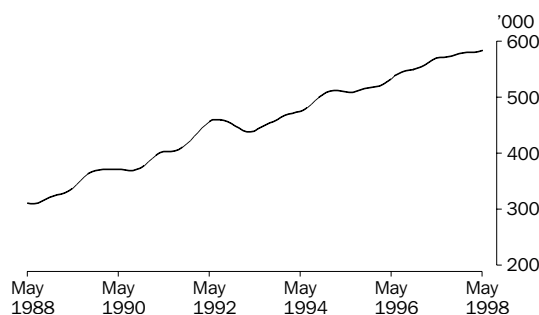
MALES EMPLOYED FULL TIME

From a low of 3,935,700 in late 1992, the trend estimate of males employed full time grew strongly to reach 4,207,200 in January 1996. Growth then slowed until early 1997 when the trend estimate fell slightly, to 4,198,000 in May 1997. The trend has since resumed rising and was 4,269,800 in May 1998.



MALES EMPLOYED PART TIME

The trend estimate for males employed part time has almost doubled over the past 10 years, from 311,100 in May 1988 to 583,000 in May 1998. Apart from some small periods of decline over this time, growth of the trend estimate has been relatively steady. Over the past year, the trend has increased by 2.4%.

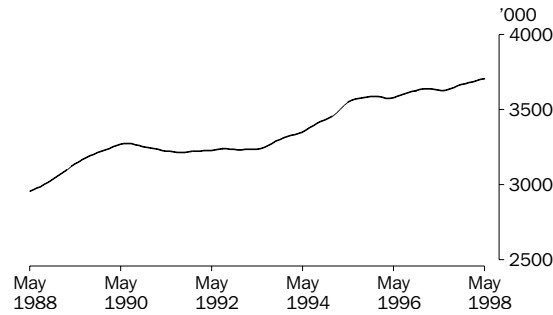


EMPLOYED PERSONS: Trend estimates

EMPLOYED FEMALES

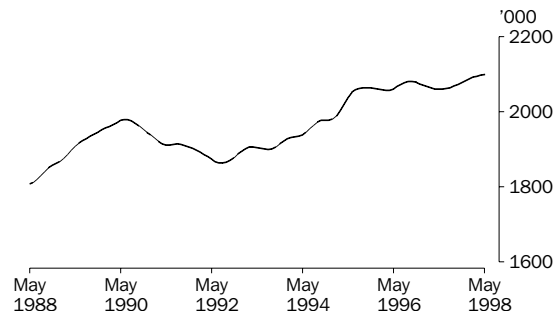
TOTAL

From 3,232,300 in December 1992, the trend estimate of female employment increased steadily to reach 3,587,100 in December 1995. Apart from small falls in early 1996 and early 1997, the trend has continued rising and was 3,706,600 in May 1998.



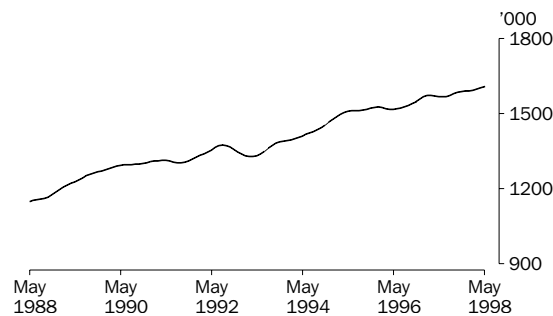
FEMALES EMPLOYED FULL TIME

Apart from some short periods of decline, the trend estimate of females employed full time rose strongly from 1,863,600 in August 1992 to 2,063,400 in September 1995. The trend estimate then remained relatively flat until May 1997, but has been rising since. In May 1998, the trend estimate stood at 2,098,300.



FEMALES EMPLOYED PART TIME

The trend estimate of female part-time employment has been rising steadily over the past 10 years, with only one significant period of decline between August 1992 and April 1993. The trend estimate was 1,608,300 in May 1998, an increase of 2.6% in the last 12 months.



LABOUR FORCE STATUS (AGED 15 AND OVER): Original

Month	EMPLOYED.....			UNEMPLOYED.....			Labour force	Not in labour force	Civilian population aged 15 and over	Unemployment rate	Participation rate
	Full time	Part time	Total	Looking for f/t work	Looking for p/t work	Total					
	'000	'000	'000	'000	'000	'000	'000	'000	'000	%	%
MALES											
1997											
March	4 186.6	568.9	4 755.6	418.4	69.5	487.9	5 243.5	1 895.2	7 138.7	9.3	73.5
April	4 189.4	578.1	4 767.5	396.9	63.3	460.2	5 227.7	1 919.5	7 147.1	8.8	73.1
May	4 183.6	577.1	4 760.7	402.9	55.2	458.1	5 218.8	1 936.8	7 155.6	8.8	72.9
June	4 191.0	591.4	4 782.4	384.4	52.0	436.4	5 218.8	1 945.3	7 164.1	8.4	72.8
July	4 231.3	562.9	4 794.2	397.5	50.1	447.6	5 241.8	1 930.9	7 172.8	8.5	73.1
August	4 153.3	575.9	4 729.2	398.5	49.4	447.8	5 177.0	2 004.4	7 181.4	8.7	72.1
September	4 235.5	581.0	4 816.6	399.5	70.0	469.5	5 286.1	1 904.0	7 190.1	8.9	73.5
October	4 234.5	577.3	4 811.8	370.2	56.5	426.7	5 238.5	1 961.2	7 199.7	8.1	72.8
November	4 238.8	582.6	4 821.4	378.3	59.0	437.2	5 258.7	1 950.6	7 209.3	8.3	72.9
December	4 309.7	586.8	4 896.5	380.0	66.5	446.5	5 343.0	1 875.9	7 218.9	8.4	74.0
1998											
January	4 270.0	541.9	4 811.9	417.8	59.9	477.8	5 289.7	1 936.9	7 226.6	9.0	73.2
February	4 261.2	554.5	4 815.7	412.9	70.0	482.9	5 298.7	1 935.6	7 234.3	9.1	73.2
March	4 246.0	587.4	4 833.4	396.2	63.3	459.5	5 292.9	1 949.1	7 242.0	8.7	73.1
April	4 268.7	587.1	4 855.8	359.0	59.2	418.2	5 274.0	1 976.4	7 250.4	7.9	72.7
May	4 249.0	598.8	4 847.8	377.4	56.1	433.5	5 281.3	1 977.6	7 258.9	8.2	72.8
FEMALES											
1997											
March	2 044.9	1 592.8	3 637.7	234.8	122.7	357.4	3 995.2	3 372.6	7 367.8	8.9	54.2
April	2 054.1	1 589.6	3 643.7	230.6	108.8	339.4	3 983.1	3 393.4	7 376.5	8.5	54.0
May	2 051.9	1 576.7	3 628.6	220.8	113.0	333.8	3 962.4	3 422.8	7 385.2	8.4	53.7
June	2 031.6	1 604.1	3 635.8	215.6	98.7	314.4	3 950.1	3 443.8	7 393.9	8.0	53.4
July	2 092.2	1 565.7	3 657.9	207.2	96.1	303.3	3 961.2	3 441.4	7 402.6	7.7	53.5
August	2 025.0	1 561.3	3 586.3	213.9	102.9	316.8	3 903.1	3 508.3	7 411.4	8.1	52.7
September	2 084.6	1 625.2	3 709.8	213.3	110.2	323.5	4 033.3	3 386.8	7 420.1	8.0	54.4
October	2 072.2	1 579.8	3 652.1	208.1	101.7	309.8	3 961.8	3 467.4	7 429.2	7.8	53.3
November	2 081.6	1 618.5	3 700.0	204.2	95.3	299.6	3 999.6	3 438.7	7 438.3	7.5	53.8
December	2 133.9	1 584.9	3 718.8	218.0	99.1	317.1	4 035.9	3 411.5	7 447.4	7.9	54.2
1998											
January	2 085.9	1 488.5	3 574.4	236.0	103.1	339.1	3 913.6	3 540.8	7 454.3	8.7	52.5
February	2 086.7	1 559.7	3 646.4	244.8	114.7	359.5	4 005.9	3 455.3	7 461.2	9.0	53.7
March	2 083.9	1 603.1	3 687.0	230.5	112.0	342.5	4 029.5	3 438.6	7 468.2	8.5	54.0
April	2 098.2	1 622.4	3 720.6	209.0	109.5	318.6	4 039.2	3 436.7	7 475.9	7.9	54.0
May	2 076.8	1 643.0	3 719.8	212.4	92.6	304.9	4 024.7	3 459.0	7 483.7	7.6	53.8
PERSONS											
1997											
March	6 231.5	2 161.8	8 393.3	653.2	192.2	845.4	9 238.7	5 267.8	14 506.5	9.2	63.7
April	6 243.5	2 167.6	8 411.2	627.5	172.2	799.6	9 210.8	5 312.8	14 523.6	8.7	63.4
May	6 235.5	2 153.8	8 389.3	623.7	168.2	791.9	9 181.2	5 359.6	14 540.8	8.6	63.1
June	6 222.6	2 195.5	8 418.1	600.1	150.7	750.8	9 168.9	5 389.1	14 558.0	8.2	63.0
July	6 323.5	2 128.6	8 452.1	604.7	146.2	750.9	9 203.0	5 372.4	14 575.4	8.2	63.1
August	6 178.4	2 137.1	8 315.5	612.4	152.2	764.6	9 080.1	5 512.7	14 592.8	8.4	62.2
September	6 320.2	2 206.2	8 526.4	612.8	180.2	793.0	9 319.4	5 290.9	14 610.3	8.5	63.8
October	6 306.7	2 157.2	8 463.9	578.3	158.1	736.4	9 200.3	5 428.6	14 628.9	8.0	62.9
November	6 320.4	2 201.1	8 521.5	582.5	154.3	736.8	9 258.3	5 389.3	14 647.6	8.0	63.2
December	6 443.6	2 171.7	8 615.2	598.0	165.7	763.6	9 378.9	5 287.4	14 666.3	8.1	63.9
1998											
January	6 355.9	2 030.4	8 386.3	653.9	163.0	816.9	9 203.2	5 477.7	14 680.9	8.9	62.7
February	6 347.9	2 114.2	8 462.1	657.7	184.8	842.5	9 304.6	5 390.9	14 695.5	9.1	63.3
March	6 329.9	2 190.5	8 520.4	626.7	175.3	802.0	9 322.4	5 387.7	14 710.1	8.6	63.4
April	6 366.9	2 209.5	8 576.4	568.0	168.8	736.8	9 313.2	5 413.2	14 726.4	7.9	63.2
May	6 325.8	2 241.8	8 567.6	589.8	148.7	738.5	9 306.1	5 436.6	14 742.6	7.9	63.1

LABOUR FORCE STATUS (AGED 15 AND OVER): Seasonally adjusted

Month	EMPLOYED.....			UNEMPLOYED.....			Labour force '000	Unemp- loyment rate %	Partic- ipation rate %
	Full time	Part time	Total	Looking for f/t work	Looking for p/t work	Total			
	'000	'000	'000	'000	'000	'000			
MALES									
1997									
March	4 203.4	559.3	4 762.7	409.8	59.3	469.1	5 231.8	9.0	73.3
April	4 201.6	567.5	4 769.1	404.2	60.7	464.8	5 233.9	8.9	73.2
May	4 193.5	572.4	4 765.9	405.6	57.7	463.3	5 229.2	8.9	73.1
June	4 199.9	578.6	4 778.5	394.5	57.5	452.0	5 230.6	8.6	73.0
July	4 207.8	568.7	4 776.6	417.7	56.7	474.4	5 251.0	9.0	73.2
August	4 195.4	567.0	4 762.4	406.5	55.8	462.4	5 224.7	8.8	72.8
September	4 224.2	566.7	4 790.9	399.5	64.7	464.3	5 255.2	8.8	73.1
October	4 233.3	574.3	4 807.6	391.4	59.6	451.0	5 258.6	8.6	73.0
November	4 247.0	584.5	4 831.5	391.5	66.4	457.9	5 289.4	8.7	73.4
December	4 248.4	587.8	4 836.3	382.5	62.6	445.1	5 281.4	8.4	73.2
1998									
January	4 271.4	572.1	4 843.5	378.6	54.9	433.5	5 277.0	8.2	73.0
February	4 257.3	580.6	4 837.8	379.2	64.8	444.0	5 281.9	8.4	73.0
March	4 263.3	577.8	4 841.1	387.9	54.0	441.8	5 282.9	8.4	72.9
April	4 281.1	576.1	4 857.2	365.8	56.7	422.5	5 279.7	8.0	72.8
May	4 259.8	593.8	4 853.5	379.9	58.9	438.8	5 292.3	8.3	72.9
FEMALES									
1997									
March	2 047.8	1 575.3	3 623.1	225.5	106.2	331.6	3 954.8	8.4	53.7
April	2 067.8	1 570.9	3 638.7	229.3	106.2	335.5	3 974.2	8.4	53.9
May	2 064.4	1 558.3	3 622.7	228.2	116.7	344.9	3 967.7	8.7	53.7
June	2 047.8	1 569.7	3 617.5	224.3	106.7	331.0	3 948.6	8.4	53.4
July	2 072.1	1 565.5	3 637.6	219.8	106.2	326.0	3 963.6	8.2	53.5
August	2 060.2	1 566.2	3 626.5	224.9	110.2	335.1	3 961.6	8.5	53.5
September	2 071.6	1 584.5	3 656.1	218.3	104.6	322.9	3 979.0	8.1	53.6
October	2 066.0	1 586.7	3 652.7	218.7	103.8	322.6	3 975.2	8.1	53.5
November	2 077.3	1 598.4	3 675.7	219.0	101.8	320.8	3 996.5	8.0	53.7
December	2 089.3	1 588.4	3 677.7	215.2	101.2	316.4	3 994.1	7.9	53.6
1998									
January	2 086.1	1 585.0	3 671.1	214.5	106.9	321.3	3 992.5	8.0	53.6
February	2 093.3	1 598.2	3 691.5	209.5	97.4	306.9	3 998.5	7.7	53.6
March	2 087.3	1 585.5	3 672.8	221.6	97.0	318.6	3 991.4	8.0	53.4
April	2 111.9	1 603.0	3 714.9	208.0	106.8	314.7	4 029.7	7.8	53.9
May	2 089.2	1 624.6	3 713.8	219.5	95.6	315.1	4 028.9	7.8	53.8
PERSONS									
1997									
March	6 251.2	2 134.6	8 385.8	635.3	165.5	800.8	9 186.6	8.7	63.3
April	6 269.4	2 138.4	8 407.8	633.4	166.9	800.3	9 208.1	8.7	63.4
May	6 257.9	2 130.7	8 388.6	633.8	174.5	808.2	9 196.8	8.8	63.2
June	6 247.7	2 148.4	8 396.1	618.8	164.3	783.1	9 179.2	8.5	63.1
July	6 280.0	2 134.2	8 414.2	637.5	162.9	800.4	9 214.6	8.7	63.2
August	6 255.6	2 133.2	8 388.8	631.4	166.1	797.5	9 186.3	8.7	63.0
September	6 295.8	2 151.2	8 447.0	617.8	169.3	787.1	9 234.2	8.5	63.2
October	6 299.3	2 161.0	8 460.3	610.1	163.4	773.5	9 233.8	8.4	63.1
November	6 324.3	2 182.9	8 507.2	610.5	168.2	778.7	9 285.9	8.4	63.4
December	6 337.8	2 176.2	8 514.0	597.7	163.8	761.5	9 275.5	8.2	63.2
1998									
January	6 357.5	2 157.1	8 514.6	593.1	161.8	754.8	9 269.5	8.1	63.1
February	6 350.6	2 178.8	8 529.4	588.7	162.2	751.0	9 280.3	8.1	63.2
March	6 350.5	2 163.3	8 513.9	609.4	151.0	760.4	9 274.3	8.2	63.0
April	6 393.0	2 179.1	8 572.1	573.8	163.4	737.2	9 309.3	7.9	63.2
May	6 349.0	2 218.4	8 567.4	599.4	154.4	753.9	9 321.2	8.1	63.2

LABOUR FORCE STATUS (AGED 15 AND OVER): Trend(a)

Month	EMPLOYED.....			UNEMPLOYED.....			Labour force	Unemployment rate	Participation rate
	Full time	Part time	Total	Looking for f/t work	Looking for p/t work	Total			
	'000	'000	'000	'000	'000	'000	'000	%	%
MALES									
1997									
March	4 205.5	562.1	4 767.6	405.3	58.9	464.2	5 231.8	8.9	73.3
April	4 200.8	566.5	4 767.2	406.5	58.4	464.9	5 232.1	8.9	73.2
May	4 198.0	569.3	4 767.3	407.0	58.0	464.9	5 232.3	8.9	73.1
June	4 198.4	570.6	4 769.0	406.6	57.7	464.4	5 233.3	8.9	73.1
July	4 202.4	571.0	4 773.4	405.5	58.3	463.8	5 237.2	8.9	73.0
August	4 210.0	571.7	4 781.7	403.4	59.3	462.7	5 244.4	8.8	73.0
September	4 220.3	573.0	4 793.3	399.8	60.6	460.4	5 253.7	8.8	73.1
October	4 231.7	575.3	4 807.0	394.9	61.8	456.7	5 263.7	8.7	73.1
November	4 243.1	577.6	4 820.7	389.6	62.2	451.8	5 272.5	8.6	73.1
December	4 252.6	579.2	4 831.8	385.0	61.7	446.6	5 278.4	8.5	73.1
1998									
January	4 259.4	579.8	4 839.2	381.9	60.4	442.3	5 281.5	8.4	73.1
February	4 263.7	579.9	4 843.7	379.8	59.1	438.9	5 282.6	8.3	73.0
March	4 266.8	580.5	4 847.3	378.1	58.1	436.1	5 283.5	8.3	73.0
April	4 269.0	581.7	4 850.7	376.7	57.4	434.0	5 284.7	8.2	72.9
May	4 269.8	583.0	4 852.8	375.6	56.6	432.2	5 285.0	8.2	72.8
FEMALES									
1997									
March	2 063.1	1 572.8	3 635.9	227.5	109.0	336.6	3 972.5	8.5	53.9
April	2 060.7	1 571.0	3 631.7	227.2	109.2	336.5	3 968.1	8.5	53.8
May	2 059.8	1 568.0	3 627.8	226.2	109.3	335.5	3 963.4	8.5	53.7
June	2 060.1	1 566.5	3 626.6	224.8	109.1	333.9	3 960.5	8.4	53.6
July	2 061.7	1 568.5	3 630.2	223.3	108.3	331.7	3 961.8	8.4	53.5
August	2 064.4	1 573.4	3 637.7	221.8	107.0	328.8	3 966.5	8.3	53.5
September	2 068.1	1 579.8	3 647.9	220.1	105.6	325.7	3 973.6	8.2	53.6
October	2 072.5	1 585.3	3 657.8	218.5	104.2	322.7	3 980.5	8.1	53.6
November	2 077.7	1 588.6	3 666.3	217.1	103.1	320.2	3 986.4	8.0	53.6
December	2 082.9	1 590.1	3 673.0	215.8	102.3	318.1	3 991.1	8.0	53.6
1998									
January	2 087.8	1 591.4	3 679.2	214.8	101.6	316.4	3 995.6	7.9	53.6
February	2 091.8	1 593.8	3 685.6	214.4	101.0	315.4	4 001.1	7.9	53.6
March	2 094.9	1 598.0	3 692.9	214.4	100.5	314.8	4 007.7	7.9	53.7
April	2 097.3	1 603.2	3 700.4	214.6	99.9	314.4	4 014.9	7.8	53.7
May	2 098.3	1 608.3	3 706.6	215.0	99.3	314.3	4 020.9	7.8	53.7
PERSONS									
1997									
March	6 268.7	2 134.9	8 403.5	632.8	168.0	800.8	9 204.3	8.7	63.4
April	6 261.5	2 137.4	8 398.9	633.7	167.7	801.4	9 200.3	8.7	63.3
May	6 257.8	2 137.4	8 395.1	633.2	167.3	800.5	9 195.6	8.7	63.2
June	6 258.5	2 137.1	8 395.6	631.4	166.9	798.3	9 193.8	8.7	63.2
July	6 264.1	2 139.5	8 403.6	628.8	166.6	795.5	9 199.1	8.6	63.1
August	6 274.3	2 145.1	8 419.4	625.2	166.3	791.5	9 210.9	8.6	63.1
September	6 288.4	2 152.7	8 441.2	619.8	166.3	786.1	9 227.3	8.5	63.2
October	6 304.2	2 160.6	8 464.8	613.4	166.0	779.4	9 244.2	8.4	63.2
November	6 320.8	2 166.2	8 487.0	606.7	165.3	772.0	9 258.9	8.3	63.2
December	6 335.5	2 169.3	8 504.8	600.8	164.0	764.7	9 269.5	8.2	63.2
1998									
January	6 347.2	2 171.3	8 518.4	596.7	162.0	758.7	9 277.1	8.2	63.2
February	6 355.6	2 173.7	8 529.3	594.2	160.1	754.3	9 283.6	8.1	63.2
March	6 361.7	2 178.5	8 540.2	592.4	158.5	750.9	9 291.1	8.1	63.2
April	6 366.3	2 184.8	8 551.1	591.2	157.2	748.5	9 299.6	8.0	63.1
May	6 368.1	2 191.3	8 559.4	590.5	156.0	746.5	9 306.0	8.0	63.1

(a) Trend estimates for November 1997 to April 1998 have been revised.

UNEMPLOYED PERSONS: Original

Month	NUMBER OF UNEMPLOYED PERSONS.....					UNEMPLOYMENT RATE.....					UNEMPLOYMENT TO POPULATION RATIO	
	Aged 15-19 looking for f/t work	Aged 20 and over looking for f/t work	Total looking for f/t work	Looking for p/t work	Total	Aged 15-19 looking for f/t work	Aged 20 and over looking for f/t work	Total looking for f/t work	Looking for p/t work	Total	Aged 15-19 looking for f/t work	Aged 20 and over looking for f/t work
	'000	'000	'000	'000	'000	%	%	%	%	%	%	%
MALES												
1997												
March	55.2	363.2	418.4	69.5	487.9	28.4	8.2	9.1	10.9	9.3	8.4	5.6
April	50.2	346.7	396.9	63.3	460.2	25.3	7.9	8.7	9.9	8.8	7.6	5.3
May	51.8	351.1	402.9	55.2	458.1	27.7	8.0	8.8	8.7	8.8	7.9	5.4
June	47.9	336.5	384.4	52.0	436.4	26.7	7.7	8.4	8.1	8.4	7.3	5.2
July	47.1	350.5	397.5	50.1	447.6	24.5	7.9	8.6	8.2	8.5	7.1	5.4
August	44.4	354.1	398.5	49.4	447.8	25.1	8.1	8.8	7.9	8.7	6.7	5.4
September	44.7	354.8	399.5	70.0	469.5	24.0	8.0	8.6	10.8	8.9	6.8	5.4
October	44.7	325.5	370.2	56.5	426.7	23.3	7.4	8.0	8.9	8.1	6.8	5.0
November	43.7	334.5	378.3	59.0	437.2	23.9	7.5	8.2	9.2	8.3	6.6	5.1
December	56.9	323.1	380.0	66.5	446.5	27.2	7.2	8.1	10.2	8.4	8.6	4.9
1998												
January	59.2	358.6	417.8	59.9	477.8	26.9	8.0	8.9	10.0	9.0	8.9	5.5
February	52.3	360.7	412.9	70.0	482.9	25.3	8.1	8.8	11.2	9.1	7.8	5.5
March	54.5	341.7	396.2	63.3	459.5	26.8	7.7	8.5	9.7	8.7	8.2	5.2
April	44.6	314.4	359.0	59.2	418.2	23.5	7.1	7.8	9.2	7.9	6.7	4.8
May	49.9	327.5	377.4	56.1	433.5	25.8	7.4	8.2	8.6	8.2	7.5	5.0
FEMALES												
1997												
March	36.5	198.3	234.8	122.7	357.4	32.3	9.2	10.3	7.1	8.9	5.8	2.9
April	35.3	195.3	230.6	108.8	339.4	32.3	9.0	10.1	6.4	8.5	5.6	2.9
May	30.3	190.5	220.8	113.0	333.8	29.3	8.8	9.7	6.7	8.4	4.8	2.8
June	31.6	184.1	215.6	98.7	314.4	31.5	8.6	9.6	5.8	8.0	5.0	2.7
July	28.4	178.8	207.2	96.1	303.3	25.5	8.2	9.0	5.8	7.7	4.5	2.6
August	30.5	183.4	213.9	102.9	316.8	29.7	8.6	9.6	6.2	8.1	4.9	2.7
September	29.7	183.6	213.3	110.2	323.5	28.0	8.4	9.3	6.3	8.0	4.7	2.7
October	30.9	177.2	208.1	101.7	309.8	28.6	8.2	9.1	6.0	7.8	4.9	2.6
November	34.1	170.2	204.2	95.3	299.6	33.6	7.8	8.9	5.6	7.5	5.4	2.5
December	45.1	172.9	218.0	99.1	317.1	34.5	7.8	9.3	5.9	7.9	7.1	2.5
1998												
January	52.3	183.8	236.0	103.1	339.1	36.9	8.4	10.2	6.5	8.7	8.3	2.7
February	43.3	201.5	244.8	114.7	359.5	34.2	9.1	10.5	6.9	9.0	6.8	3.0
March	41.1	189.4	230.5	112.0	342.5	35.1	8.6	10.0	6.5	8.5	6.5	2.8
April	35.0	174.0	209.0	109.5	318.6	31.4	7.9	9.1	6.3	7.9	5.5	2.5
May	35.9	176.4	212.4	92.6	304.9	33.7	8.1	9.3	5.3	7.6	5.7	2.6
PERSONS												
1997												
March	91.7	561.5	653.2	192.2	845.4	29.8	8.5	9.5	8.2	9.2	7.1	4.2
April	85.5	542.0	627.5	172.2	799.6	27.8	8.3	9.1	7.4	8.7	6.7	4.1
May	82.0	541.7	623.7	168.2	791.9	28.3	8.2	9.1	7.2	8.6	6.4	4.1
June	79.5	520.6	600.1	150.7	750.8	28.4	8.0	8.8	6.4	8.2	6.2	3.9
July	75.4	529.3	604.7	146.2	750.9	24.9	8.0	8.7	6.4	8.2	5.9	4.0
August	74.9	537.5	612.4	152.2	764.6	26.8	8.3	9.0	6.6	8.4	5.8	4.0
September	74.5	538.4	612.8	180.2	793.0	25.4	8.1	8.8	7.6	8.5	5.8	4.0
October	75.6	502.7	578.3	158.1	736.4	25.2	7.6	8.4	6.8	8.0	5.9	3.8
November	77.8	504.7	582.5	154.3	736.8	27.4	7.6	8.4	6.6	8.0	6.0	3.8
December	102.0	496.0	598.0	165.7	763.6	30.0	7.4	8.5	7.1	8.1	7.9	3.7
1998												
January	111.5	542.4	653.9	163.0	816.9	30.8	8.2	9.3	7.4	8.9	8.6	4.1
February	95.5	562.2	657.7	184.8	842.5	28.7	8.4	9.4	8.0	9.1	7.4	4.2
March	95.6	531.1	626.7	175.3	802.0	29.8	8.0	9.0	7.4	8.6	7.3	4.0
April	79.7	488.4	568.0	168.8	736.8	26.4	7.4	8.2	7.1	7.9	6.1	3.6
May	85.9	503.9	589.8	148.7	738.5	28.6	7.6	8.5	6.2	7.9	6.6	3.7

UNEMPLOYED PERSONS: Seasonally adjusted

Month	NUMBER OF UNEMPLOYED PERSONS....					UNEMPLOYMENT RATE.....					UNEMPLOYMENT TO POPULATION RATIO	
	Aged 15-19 looking for f/t work	Aged 20 and over looking for f/t work	Total looking for f/t work	Looking for p/t work	Total	Aged 15-19 looking for f/t work	Aged 20 and over looking for f/t work	Total looking for f/t work	Looking for p/t work	Total	Aged 15-19 looking for f/t work	Aged 20 and over looking for f/t work
	'000	'000	'000	'000	'000	%	%	%	%	%	%	%
MALES												
1997												
March	54.9	354.9	409.8	59.3	469.1	28.4	8.0	8.9	9.6	9.0	8.4	5.5
April	51.4	352.8	404.2	60.7	464.8	26.1	8.0	8.8	9.7	8.9	7.8	5.4
May	51.1	354.4	405.6	57.7	463.3	26.6	8.0	8.8	9.2	8.9	7.8	5.5
June	49.3	345.2	394.5	57.5	452.0	26.0	7.8	8.6	9.0	8.6	7.5	5.3
July	52.2	365.4	417.7	56.7	474.4	26.8	8.2	9.0	9.1	9.0	7.9	5.6
August	50.4	356.2	406.5	55.8	462.4	26.3	8.1	8.8	9.0	8.8	7.6	5.5
September	50.5	349.0	399.5	64.7	464.3	25.8	7.9	8.6	10.3	8.8	7.6	5.3
October	50.2	341.1	391.4	59.6	451.0	24.9	7.7	8.5	9.4	8.6	7.6	5.2
November	48.2	343.3	391.5	66.4	457.9	24.6	7.7	8.4	10.2	8.7	7.3	5.2
December	48.2	334.3	382.5	62.6	445.1	25.6	7.5	8.3	9.6	8.4	7.2	5.1
1998												
January	47.4	331.2	378.6	54.9	433.5	24.5	7.4	8.1	8.8	8.2	7.1	5.0
February	45.8	333.4	379.2	64.8	444.0	23.8	7.5	8.2	10.0	8.4	6.9	5.1
March	54.2	333.7	387.9	54.0	441.8	26.7	7.5	8.3	8.5	8.4	8.1	5.1
April	45.8	320.1	365.8	56.7	422.5	24.4	7.2	7.9	9.0	8.0	6.8	4.9
May	49.2	330.6	379.9	58.9	438.8	24.7	7.4	8.2	9.0	8.3	7.4	5.0
FEMALES												
1997												
March	35.6	189.8	225.5	106.2	331.6	30.6	8.8	9.9	6.3	8.4	5.7	2.8
April	37.4	191.9	229.3	106.2	335.5	32.3	8.8	10.0	6.3	8.4	6.0	2.8
May	31.7	196.5	228.2	116.7	344.9	29.2	9.0	10.0	7.0	8.7	5.1	2.9
June	33.7	190.6	224.3	106.7	331.0	31.4	8.8	9.9	6.4	8.4	5.4	2.8
July	33.2	186.6	219.8	106.2	326.0	29.6	8.6	9.6	6.4	8.2	5.3	2.8
August	33.4	191.5	224.9	110.2	335.1	29.9	8.8	9.8	6.6	8.5	5.3	2.8
September	33.1	185.1	218.3	104.6	322.9	30.0	8.5	9.5	6.2	8.1	5.3	2.7
October	35.9	182.9	218.7	103.8	322.6	32.0	8.4	9.6	6.1	8.1	5.7	2.7
November	37.9	181.1	219.0	101.8	320.8	34.6	8.3	9.5	6.0	8.0	6.0	2.7
December	36.9	178.3	215.2	101.2	316.4	32.5	8.1	9.3	6.0	7.9	5.8	2.6
1998												
January	41.1	173.4	214.5	106.9	321.3	34.7	7.9	9.3	6.3	8.0	6.5	2.5
February	35.4	174.2	209.5	97.4	306.9	30.7	8.0	9.1	5.7	7.7	5.6	2.6
March	40.1	181.4	221.6	97.0	318.6	33.3	8.3	9.6	5.8	8.0	6.3	2.7
April	37.1	170.8	208.0	106.8	314.7	31.4	7.8	9.0	6.2	7.8	5.9	2.5
May	37.6	181.9	219.5	95.6	315.1	33.6	8.3	9.5	5.6	7.8	5.9	2.7
PERSONS												
1997												
March	90.6	544.7	635.3	165.5	800.8	29.2	8.3	9.2	7.2	8.7	7.1	4.1
April	88.7	544.7	633.4	166.9	800.3	28.4	8.3	9.2	7.2	8.7	6.9	4.1
May	82.9	550.9	633.8	174.5	808.2	27.5	8.4	9.2	7.6	8.8	6.4	4.2
June	83.0	535.8	618.8	164.3	783.1	28.0	8.2	9.0	7.1	8.5	6.5	4.0
July	85.4	552.1	637.5	162.9	800.4	27.8	8.4	9.2	7.1	8.7	6.6	4.2
August	83.8	547.7	631.4	166.1	797.5	27.6	8.3	9.2	7.2	8.7	6.5	4.1
September	83.6	534.2	617.8	169.3	787.1	27.3	8.1	8.9	7.3	8.5	6.5	4.0
October	86.1	524.0	610.1	163.4	773.5	27.4	7.9	8.8	7.0	8.4	6.7	3.9
November	86.1	524.4	610.5	168.2	778.7	28.1	7.9	8.8	7.2	8.4	6.7	3.9
December	85.1	512.6	597.7	163.8	761.5	28.2	7.7	8.6	7.0	8.2	6.6	3.8
1998												
January	88.5	504.6	593.1	161.8	754.8	28.4	7.6	8.5	7.0	8.1	6.8	3.8
February	81.2	507.6	588.7	162.2	751.0	26.4	7.7	8.5	6.9	8.1	6.2	3.8
March	94.3	515.1	609.4	151.0	760.4	29.2	7.8	8.8	6.5	8.2	7.3	3.8
April	82.9	490.9	573.8	163.4	737.2	27.1	7.4	8.2	7.0	7.9	6.4	3.7
May	86.9	512.6	599.4	154.4	753.9	27.9	7.7	8.6	6.5	8.1	6.7	3.8

UNEMPLOYED PERSONS: Trend(a)

Month	NUMBER OF UNEMPLOYED PERSONS.....					UNEMPLOYMENT RATE.....					UNEMPLOYMENT TO POPULATION RATIO	
	<i>Aged 15-19 looking for f/t work</i>	<i>Aged 20 and over looking for f/t work</i>	<i>Total looking for f/t work</i>	<i>Looking for p/t work</i>	<i>Total</i>	<i>Aged 15-19 looking for f/t work</i>	<i>Aged 20 and over looking for f/t work</i>	<i>Total looking for f/t work</i>	<i>Looking for p/t work</i>	<i>Total</i>	<i>Aged 15-19 looking for f/t work</i>	<i>Aged 20 and over looking for f/t work</i>
	'000	'000	'000	'000	'000	%	%	%	%	%	%	%
MALES												
1997												
March	52.6	352.7	405.3	58.9	464.2	26.8	8.0	8.8	9.5	8.9	8.0	5.4
April	52.0	354.5	406.5	58.4	464.9	26.8	8.0	8.8	9.4	8.9	7.9	5.5
May	51.5	355.5	407.0	58.0	464.9	26.7	8.1	8.8	9.2	8.9	7.8	5.5
June	51.2	355.5	406.6	57.7	464.4	26.6	8.1	8.8	9.2	8.9	7.8	5.5
July	50.8	354.7	405.5	58.3	463.8	26.3	8.0	8.8	9.3	8.9	7.7	5.4
August	50.5	352.9	403.4	59.3	462.7	26.0	8.0	8.7	9.4	8.8	7.6	5.4
September	50.1	349.7	399.8	60.6	460.4	25.6	7.9	8.7	9.6	8.8	7.6	5.4
October	49.5	345.5	394.9	61.8	456.7	25.3	7.8	8.5	9.7	8.7	7.5	5.3
November	48.8	340.8	389.6	62.2	451.8	25.0	7.7	8.4	9.7	8.6	7.4	5.2
December	48.4	336.6	385.0	61.7	446.6	24.9	7.6	8.3	9.6	8.5	7.3	5.1
1998												
January	48.2	333.6	381.9	60.4	442.3	24.9	7.5	8.2	9.4	8.4	7.2	5.1
February	48.4	331.5	379.8	59.1	438.9	24.9	7.4	8.2	9.2	8.3	7.3	5.0
March	48.6	329.5	378.1	58.1	436.1	25.0	7.4	8.1	9.1	8.3	7.3	5.0
April	48.7	327.9	376.7	57.4	434.0	25.0	7.4	8.1	9.0	8.2	7.3	5.0
May	49.0	326.6	375.6	56.6	432.2	25.0	7.3	8.1	8.9	8.2	7.3	5.0
FEMALES												
1997												
March	35.5	192.0	227.5	109.0	336.6	31.0	8.8	9.9	6.5	8.5	5.7	2.8
April	34.4	192.8	227.2	109.2	336.5	30.6	8.9	9.9	6.5	8.5	5.5	2.9
May	33.7	192.5	226.2	109.3	335.5	30.3	8.9	9.9	6.5	8.5	5.4	2.8
June	33.3	191.5	224.8	109.1	333.9	30.1	8.8	9.8	6.5	8.4	5.3	2.8
July	33.2	190.1	223.3	108.3	331.7	30.1	8.7	9.8	6.5	8.4	5.3	2.8
August	33.6	188.2	221.8	107.0	328.8	30.5	8.7	9.7	6.4	8.3	5.3	2.8
September	34.4	185.7	220.1	105.6	325.7	31.1	8.5	9.6	6.3	8.2	5.5	2.7
October	35.6	182.9	218.5	104.2	322.7	31.9	8.4	9.5	6.2	8.1	5.7	2.7
November	36.8	180.3	217.1	103.1	320.2	32.7	8.3	9.5	6.1	8.0	5.8	2.6
December	37.7	178.1	215.8	102.3	318.1	33.0	8.2	9.4	6.0	8.0	6.0	2.6
1998												
January	38.2	176.6	214.8	101.6	316.4	33.0	8.1	9.3	6.0	7.9	6.0	2.6
February	38.3	176.1	214.4	101.0	315.4	32.8	8.0	9.3	6.0	7.9	6.0	2.6
March	38.2	176.1	214.4	100.5	314.8	32.6	8.0	9.3	5.9	7.9	6.0	2.6
April	38.1	176.5	214.6	99.9	314.4	32.5	8.0	9.3	5.9	7.8	6.0	2.6
May	37.8	177.1	215.0	99.3	314.3	32.4	8.1	9.3	5.8	7.8	6.0	2.6
PERSONS												
1997												
March	88.1	544.7	632.8	168.0	800.8	28.4	8.3	9.2	7.3	8.7	6.9	4.1
April	86.4	547.3	633.7	167.7	801.4	28.2	8.3	9.2	7.3	8.7	6.7	4.1
May	85.2	548.0	633.2	167.3	800.5	28.0	8.3	9.2	7.3	8.7	6.6	4.1
June	84.4	547.0	631.4	166.9	798.3	27.9	8.3	9.2	7.2	8.7	6.6	4.1
July	84.0	544.8	628.8	166.6	795.5	27.7	8.3	9.1	7.2	8.6	6.5	4.1
August	84.1	541.1	625.2	166.3	791.5	27.6	8.2	9.1	7.2	8.6	6.5	4.1
September	84.5	535.4	619.8	166.3	786.1	27.6	8.1	9.0	7.2	8.5	6.5	4.0
October	85.1	528.4	613.4	166.0	779.4	27.7	8.0	8.9	7.1	8.4	6.6	4.0
November	85.6	521.0	606.7	165.3	772.0	27.8	7.9	8.8	7.1	8.3	6.6	3.9
December	86.1	514.7	600.8	164.0	764.7	27.9	7.8	8.7	7.0	8.2	6.6	3.8
1998												
January	86.4	510.3	596.7	162.0	758.7	27.9	7.7	8.6	6.9	8.2	6.7	3.8
February	86.7	507.6	594.2	160.1	754.3	27.9	7.6	8.6	6.9	8.1	6.7	3.8
March	86.8	505.6	592.4	158.5	750.9	27.8	7.6	8.5	6.8	8.1	6.7	3.8
April	86.8	504.4	591.2	157.2	748.5	27.8	7.6	8.5	6.7	8.0	6.7	3.8
May	86.8	503.8	590.5	156.0	746.5	27.7	7.6	8.5	6.6	8.0	6.7	3.7

(a) Trend estimates for November 1997 to April 1998 have been revised.

PERSONS AGED 15 TO 19—Education and Labour Force: **Original**—May 1998

	EMPLOYED.....			UNEMPLOYED.....			Labour force	Not in labour force	Civilian population aged 15-19	Unemployment rate	Participation rate
	Full time	Part time	Total	Looking for f/t work	Looking for p/t work	Total					
	'000	'000	'000	'000	'000	'000	'000	'000	'000	%	%
.....											
ATTENDING NEITHER SCHOOL NOR A TERTIARY EDUCATIONAL INSTITUTION FULL TIME											
Males	141.5	28.5	170.0	45.8	* 2.5	48.3	218.3	22.3	240.6	22.1	90.7
Females	68.4	43.7	112.1	33.3	* 3.1	36.5	148.6	26.6	175.2	24.5	84.8
Persons	209.8	72.3	282.1	79.1	5.6	84.7	366.9	48.9	415.8	23.1	88.2
.....											
ATTENDING A TERTIARY EDUCATIONAL INSTITUTION FULL TIME											
Males	* 1.7	45.5	47.2	* 1.1	6.9	8.0	55.2	45.7	100.9	14.5	54.7
Females	* 2.2	67.7	70.0	* 0.6	8.1	8.7	78.6	51.2	129.8	11.0	60.6
Persons	4.0	113.2	117.2	* 1.7	15.0	16.7	133.9	96.9	230.8	12.5	58.0
.....											
ATTENDING SCHOOL											
Males	* 0.4	80.9	81.3	* 3.1	16.8	19.9	101.2	226.5	327.6	19.7	30.9
Females	* 0.0	111.9	111.9	* 2.0	19.3	21.4	133.3	196.7	329.9	16.0	40.4
Persons	* 0.4	192.8	193.2	5.1	36.2	41.3	234.5	423.1	657.6	17.6	35.7
.....											
TOTAL											
Males	143.6	154.9	298.5	49.9	26.3	76.2	374.7	294.5	669.1	20.3	56.0
Females	70.6	223.4	294.0	35.9	30.6	66.5	360.5	274.5	635.0	18.4	56.8
Persons	214.2	378.3	592.5	85.9	56.8	142.7	735.2	568.9	1 304.1	19.4	56.4
.....											

LABOUR FORCE STATUS (AGED 15 & OVER)—States & Territories: **Original**—May 1998

	EMPLOYED.....			UNEMPLOYED.....			Labour force '000	Not in labour force '000	Civilian population aged 15 and over '000	Unemployment rate %	Participation rate %
	Full time	Part time	Total	Looking for f/t work	Looking for p/t work	Total					
	'000	'000	'000	'000	'000	'000					
MALES											
New South Wales	1 434.0	180.6	1 614.6	115.7	17.5	133.2	1 747.8	702.3	2 450.1	7.6	71.3
Victoria	1 060.1	157.6	1 217.7	93.7	16.0	109.7	1 327.4	472.7	1 800.1	8.3	73.7
Queensland	783.1	120.2	903.2	76.0	11.0	87.1	990.3	358.6	1 348.8	8.8	73.4
South Australia	314.6	48.7	363.3	38.5	4.0	42.5	405.8	179.5	585.4	10.5	69.3
Western Australia	444.6	58.8	503.5	33.1	4.9	38.0	541.4	168.7	710.1	7.0	76.2
Tasmania	96.0	17.2	113.2	12.8	* 0.8	13.5	126.7	54.6	181.3	10.7	69.9
Northern Territory	43.4	5.2	48.6	2.3	* 0.6	2.9	51.5	15.6	67.1	5.6	76.7
Australian Capital Territory	73.1	10.6	83.7	5.3	1.4	6.7	90.4	25.5	115.9	7.4	78.0
Australia	4 249.0	598.8	4 847.8	377.4	56.1	433.5	5 281.3	1 977.6	7 258.9	8.2	72.8
FEMALES											
New South Wales	707.9	512.8	1 220.7	68.5	25.4	94.0	1 314.7	1 222.9	2 537.7	7.1	51.8
Victoria	522.7	412.4	935.1	55.3	24.4	79.6	1 014.7	863.7	1 878.4	7.8	54.0
Queensland	387.9	318.3	706.2	41.0	19.2	60.2	766.4	606.5	1 373.0	7.9	55.8
South Australia	142.9	132.0	274.9	21.0	9.0	29.9	304.8	301.1	605.9	9.8	50.3
Western Australia	200.5	180.8	381.3	18.1	9.0	27.1	408.5	307.9	716.4	6.6	57.0
Tasmania	40.7	45.9	86.6	5.3	2.7	8.0	94.6	92.9	187.5	8.5	50.5
Northern Territory	27.4	12.6	40.0	* 0.8	* 0.6	1.4	41.4	23.6	65.1	3.5	63.7
Australian Capital Territory	46.9	28.1	75.0	2.3	2.3	4.6	79.6	40.2	119.8	5.8	66.4
Australia	2 076.8	1 643.0	3 719.8	212.4	92.6	304.9	4 024.7	3 459.0	7 483.7	7.6	53.8
PERSONS											
New South Wales	2 141.9	693.4	2 835.3	184.2	43.0	227.2	3 062.5	1 925.2	4 987.8	7.4	61.4
Victoria	1 582.8	570.0	2 152.8	149.0	40.3	189.3	2 342.1	1 336.4	3 678.5	8.1	63.7
Queensland	1 170.9	438.5	1 609.4	117.1	30.2	147.3	1 756.7	965.1	2 721.8	8.4	64.5
South Australia	457.5	180.7	638.2	59.5	12.9	72.4	710.6	480.7	1 191.3	10.2	59.7
Western Australia	645.1	239.7	884.8	51.2	13.9	65.1	949.9	476.6	1 426.5	6.9	66.6
Tasmania	136.7	63.0	199.8	18.1	3.5	21.6	221.3	147.5	368.8	9.7	60.0
Northern Territory	70.8	17.8	88.6	3.1	* 1.2	4.3	92.9	39.3	132.2	4.7	70.3
Australian Capital Territory	120.0	38.6	158.6	7.7	3.7	11.3	170.0	65.7	235.7	6.7	72.1
Australia	6 325.8	2 241.8	8 567.6	589.8	148.7	738.5	9 306.1	5 436.6	14 742.6	7.9	63.1

UNEMPLOYED PERSONS—New South Wales, Victoria and Queensland: **Original**

Month	NUMBER OF UNEMPLOYED PERSONS.....					UNEMPLOYMENT RATE.....					UNEMPLOYMENT TO POPULATION RATIO	
	Aged 15-19 looking for f/t work	Aged 20 and over looking for f/t work	Total looking for f/t work	Looking for p/t work	Total	Aged 15-19 looking for f/t work	Aged 20 and over looking for f/t work	Total looking for f/t work	Looking for p/t work	Total	Aged 15-19 looking for f/t work	Aged 20 and over looking for f/t work
	'000	'000	'000	'000	'000	%	%	%	%	%	%	%
NEW SOUTH WALES												
1997												
March	27.7	171.8	199.4	57.7	257.1	26.0	7.6	8.5	8.0	8.4	6.5	3.8
April	29.2	160.5	189.8	53.9	243.6	26.9	7.2	8.1	7.4	7.9	6.9	3.6
May	28.2	166.7	194.9	50.4	245.3	27.8	7.5	8.4	6.9	8.0	6.6	3.7
June	28.7	152.2	181.0	40.5	221.4	31.0	6.9	7.9	5.7	7.3	6.8	3.4
July	24.1	167.9	192.1	46.0	238.1	24.3	7.5	8.2	6.5	7.8	5.7	3.7
August	23.0	162.6	185.6	42.4	228.0	24.8	7.4	8.1	6.1	7.7	5.4	3.6
September	20.1	169.4	189.5	54.2	243.7	21.6	7.5	8.1	7.3	7.9	4.7	3.7
October	24.7	164.6	189.3	46.9	236.2	24.9	7.4	8.1	6.8	7.8	5.8	3.6
November	22.0	159.0	181.1	44.8	225.9	23.2	7.1	7.7	6.1	7.4	5.2	3.5
December	27.5	155.6	183.1	47.6	230.8	25.6	6.9	7.7	6.5	7.4	6.4	3.4
1998												
January	35.2	163.3	198.5	45.8	244.3	29.0	7.3	8.4	6.7	8.0	8.2	3.6
February	28.3	173.1	201.4	61.1	262.4	26.2	7.8	8.6	8.6	8.6	6.6	3.8
March	27.9	169.2	197.1	48.7	245.8	25.6	7.6	8.4	6.7	8.0	6.5	3.7
April	23.1	144.7	167.9	51.2	219.1	22.6	6.5	7.2	6.9	7.1	5.4	3.2
May	31.0	153.3	184.2	43.0	227.2	29.2	6.9	7.9	5.8	7.4	7.2	3.4
VICTORIA												
1997												
March	19.8	148.3	168.1	52.5	220.6	33.0	9.0	9.9	8.7	9.6	6.3	4.5
April	16.7	143.4	160.2	49.7	209.9	28.9	8.7	9.4	8.3	9.1	5.3	4.3
May	17.3	146.5	163.8	44.7	208.4	31.1	8.9	9.6	7.6	9.1	5.5	4.4
June	15.3	149.4	164.6	42.9	207.5	27.1	9.0	9.6	7.1	9.0	4.8	4.5
July	15.1	139.5	154.6	39.7	194.3	24.0	8.4	9.0	6.8	8.5	4.8	4.2
August	16.3	141.6	157.9	44.2	202.1	29.8	8.7	9.4	7.6	8.9	5.2	4.3
September	14.7	145.2	159.9	51.7	211.6	24.5	8.8	9.3	8.4	9.1	4.6	4.4
October	16.7	124.7	141.4	42.5	183.9	26.1	7.6	8.3	7.1	8.0	5.3	3.7
November	18.0	124.7	142.7	41.8	184.5	33.2	7.6	8.4	6.9	8.0	5.7	3.7
December	26.4	115.9	142.3	49.3	191.7	34.8	7.0	8.2	8.1	8.2	8.3	3.5
1998												
January	26.2	136.6	162.8	48.9	211.8	35.9	8.2	9.4	8.7	9.2	8.3	4.1
February	23.1	135.9	159.0	48.5	207.5	32.1	8.1	9.1	8.5	8.9	7.3	4.1
March	25.1	133.4	158.5	51.9	210.4	37.3	8.0	9.1	8.5	9.0	7.9	4.0
April	19.8	127.8	147.6	47.3	194.9	31.5	7.6	8.5	7.8	8.3	6.2	3.8
May	18.1	130.8	149.0	40.3	189.3	31.2	7.8	8.6	6.6	8.1	5.7	3.9
QUEENSLAND												
1997												
March	21.1	123.1	144.2	37.6	181.8	34.1	10.1	11.3	8.5	10.6	8.6	5.1
April	16.1	120.7	136.8	31.1	167.9	27.0	10.0	10.8	7.0	9.8	6.5	5.0
May	16.7	115.3	132.0	34.9	166.9	29.6	9.5	10.4	8.0	9.8	6.7	4.8
June	15.8	102.5	118.3	31.2	149.5	28.1	8.5	9.4	6.7	8.7	6.4	4.2
July	18.7	104.8	123.5	26.5	150.0	28.6	8.5	9.5	6.1	8.7	7.6	4.3
August	16.9	114.6	131.5	29.3	160.8	29.9	9.3	10.2	6.8	9.4	6.8	4.7
September	18.2	102.3	120.5	37.0	157.4	29.6	8.4	9.4	8.0	9.0	7.3	4.2
October	16.1	99.6	115.7	34.9	150.6	27.0	8.1	9.0	7.5	8.6	6.5	4.1
November	18.3	103.9	122.2	33.6	155.9	31.8	8.4	9.5	7.4	8.9	7.3	4.2
December	23.1	102.0	125.0	31.3	156.3	32.4	8.1	9.4	7.1	8.9	9.2	4.2
1998												
January	22.6	111.8	134.4	30.8	165.2	30.5	9.0	10.2	7.3	9.5	9.0	4.6
February	18.0	122.9	140.9	35.5	176.5	26.7	9.8	10.6	7.8	9.9	7.1	5.0
March	17.9	105.1	123.0	34.5	157.5	28.0	8.5	9.5	7.4	9.0	7.1	4.3
April	18.4	100.0	118.4	35.1	153.5	28.2	8.1	9.1	7.6	8.7	7.3	4.1
May	15.6	101.5	117.1	30.2	147.3	25.3	8.3	9.1	6.4	8.4	6.2	4.1

UNEMPLOYED PERSONS—South Australia, Western Australia and Tasmania: **Original**

Month	NUMBER OF UNEMPLOYED PERSONS.....					UNEMPLOYMENT RATE.....					UNEMPLOYMENT TO POPULATION RATIO	
	Aged 15-19 looking for f/t work	Aged 20 and over looking for f/t work	Total looking for f/t work	Looking for p/t work	Total	Aged 15-19 looking for f/t work	Aged 20 and over looking for f/t work	Total looking for f/t work	Looking for p/t work	Total	Aged 15-19 looking for f/t work	Aged 20 and over looking for f/t work
	'000	'000	'000	'000	'000	%	%	%	%	%	%	%
SOUTH AUSTRALIA												
1997												
March	7.6	48.3	55.9	15.2	71.1	34.0	9.7	10.7	7.0	9.6	7.7	4.5
April	10.6	46.8	57.4	13.8	71.1	42.1	9.4	10.9	6.7	9.7	10.8	4.3
May	8.4	49.0	57.4	12.4	69.8	37.1	9.8	10.9	6.1	9.6	8.6	4.5
June	7.6	47.6	55.2	13.0	68.2	36.2	9.3	10.4	6.4	9.3	7.7	4.4
July	7.7	48.0	55.7	12.3	68.0	34.9	9.4	10.5	6.2	9.3	7.8	4.4
August	6.5	48.7	55.2	12.4	67.6	28.7	9.8	10.6	6.1	9.3	6.6	4.5
September	7.2	51.2	58.4	13.8	72.2	31.9	10.1	11.1	6.6	9.8	7.3	4.7
October	7.4	49.8	57.1	12.7	69.8	32.3	9.9	10.9	6.2	9.5	7.5	4.6
November	6.5	50.8	57.4	11.9	69.3	28.8	10.0	10.8	5.8	9.5	6.6	4.7
December	8.9	49.7	58.5	12.5	71.0	35.0	9.6	10.8	6.4	9.7	9.0	4.6
1998												
January	9.2	55.0	64.2	14.7	78.9	32.5	10.8	12.0	7.9	10.9	9.3	5.0
February	8.5	52.9	61.4	15.5	76.9	34.4	10.5	11.6	7.9	10.6	8.6	4.9
March	8.8	50.5	59.3	14.4	73.6	37.6	10.1	11.3	7.4	10.2	8.9	4.6
April	8.7	47.1	55.8	11.8	67.6	38.0	9.5	10.8	6.0	9.4	8.7	4.3
May	9.1	50.3	59.5	12.9	72.4	38.2	10.2	11.5	6.7	10.2	9.2	4.6
WESTERN AUSTRALIA												
1997												
March	9.3	45.6	54.9	18.5	73.4	24.0	7.2	8.2	7.4	8.0	7.2	3.6
April	7.5	44.4	51.9	14.8	66.8	18.7	7.0	7.7	6.1	7.3	5.8	3.5
May	6.7	39.8	46.5	16.7	63.2	17.3	6.2	6.9	7.1	6.9	5.2	3.1
June	6.9	42.4	49.3	14.9	64.2	17.7	6.7	7.3	6.1	7.0	5.3	3.3
July	4.9	43.4	48.3	13.3	61.6	12.9	6.7	7.0	5.8	6.7	3.7	3.4
August	6.4	43.1	49.5	14.8	64.3	16.9	6.7	7.3	6.1	7.0	4.9	3.4
September	8.6	42.9	51.5	13.7	65.2	21.5	6.5	7.4	5.7	6.9	6.6	3.4
October	5.9	36.9	42.8	12.6	55.4	15.3	5.8	6.3	5.2	6.0	4.5	2.9
November	8.4	39.2	47.6	13.7	61.4	21.5	6.1	6.9	5.7	6.6	6.4	3.1
December	10.9	43.3	54.1	14.1	68.2	26.0	6.5	7.7	5.8	7.2	8.2	3.4
1998												
January	11.7	47.9	59.5	13.4	73.0	26.2	7.2	8.4	5.9	7.8	8.8	3.7
February	11.9	47.5	59.5	14.5	74.0	27.9	7.3	8.5	5.9	7.9	9.0	3.7
March	10.1	45.0	55.2	15.4	70.6	25.2	6.9	7.9	6.3	7.5	7.7	3.5
April	5.9	43.4	49.4	14.2	63.5	17.9	6.6	7.2	5.6	6.7	4.5	3.4
May	7.8	43.4	51.2	13.9	65.1	22.6	6.6	7.4	5.5	6.9	5.9	3.4
TASMANIA												
1997												
March	3.8	15.1	18.9	4.6	23.5	35.1	10.3	12.0	7.4	10.7	11.0	4.5
April	3.5	15.9	19.4	3.4	22.8	34.4	10.7	12.3	5.7	10.5	10.2	4.7
May	3.1	14.2	17.3	4.2	21.5	34.3	9.6	11.0	6.9	9.9	9.1	4.2
June	3.3	15.8	19.1	3.6	22.8	37.7	10.9	12.4	6.3	10.7	9.7	4.7
July	3.4	15.4	18.9	4.5	23.4	38.6	10.7	12.3	7.3	10.9	9.9	4.6
August	4.0	15.6	19.6	4.0	23.6	43.3	10.8	12.8	6.5	11.0	11.7	4.6
September	4.0	16.4	20.4	4.2	24.6	42.5	11.1	13.0	7.0	11.4	11.7	4.9
October	3.3	17.1	20.4	4.3	24.7	36.0	11.4	12.8	7.4	11.4	9.5	5.1
November	2.9	16.3	19.2	4.6	23.8	32.1	11.0	12.2	7.6	10.9	8.3	4.9
December	3.0	18.7	21.7	6.1	27.9	30.5	12.3	13.4	10.0	12.5	8.8	5.6
1998												
January	3.7	16.5	20.2	4.9	25.1	34.7	11.0	12.6	8.5	11.5	10.7	4.9
February	3.5	17.2	20.7	3.9	24.6	35.1	11.3	12.7	6.7	11.1	10.0	5.1
March	3.9	16.1	20.1	4.3	24.4	40.3	10.7	12.5	7.0	11.0	11.4	4.8
April	2.3	15.4	17.7	4.5	22.2	25.8	10.3	11.1	7.1	10.0	6.6	4.6
May	2.7	15.4	18.1	3.5	21.6	28.1	10.6	11.7	5.2	9.7	7.8	4.6

UNEMPLOYED PERSONS—Northern Territory and Australian Capital Territory: Original

Month	NUMBER OF UNEMPLOYED PERSONS.....					UNEMPLOYMENT RATE.....					UNEMPLOYMENT TO POPULATION RATIO	
	Aged 15-19 looking for f/t work	Aged 20 and over looking for f/t work	Total looking for f/t work	Looking for p/t work	Total	Aged 15-19 looking for f/t work	Aged 20 and over looking for f/t work	Total looking for f/t work	Looking for p/t work	Total	Aged 15-19 looking for f/t work	Aged 20 and over looking for f/t work
	'000	'000	'000	'000	'000	%	%	%	%	%	%	%
NORTHERN TERRITORY												
1997												
March	* 0.8	2.6	3.4	1.6	5.0	* 25.4	4.0	5.0	7.8	5.6	* 5.8	2.3
April	* 0.7	3.6	4.3	* 1.2	5.5	* 26.2	5.6	6.4	* 5.8	6.2	* 5.5	3.1
May	* 0.8	3.6	4.4	* 0.7	5.1	* 25.9	5.4	6.4	* 3.3	5.6	* 6.4	3.1
June	* 0.6	3.6	4.2	* 0.6	4.8	* 23.4	5.4	6.0	* 2.8	5.3	* 4.5	3.1
July	* 0.6	3.0	3.6	* 0.9	4.4	* 18.6	4.5	5.1	* 3.9	4.8	* 4.7	2.5
August	* 0.4	3.3	3.7	* 1.0	4.8	* 16.2	5.4	5.8	* 4.3	5.4	* 3.3	2.9
September	* 0.4	3.4	3.8	* 0.9	4.7	* 14.3	4.9	5.3	* 5.0	5.3	* 3.4	2.9
October	* 0.4	1.5	1.8	* 0.9	2.7	* 11.9	2.1	2.5	* 4.7	3.0	* 2.9	1.3
November	* 0.1	3.2	3.2	* 0.3	3.5	* 2.9	4.4	4.3	* 1.6	3.8	* 0.6	2.7
December	* 0.3	2.8	3.1	* 1.1	4.3	* 8.9	3.9	4.2	* 6.3	4.6	* 2.6	2.4
1998												
January	* 0.6	2.6	3.2	1.3	4.5	* 12.3	3.9	4.5	7.2	5.0	* 4.2	2.2
February	* 0.6	3.5	4.1	1.8	5.9	* 17.2	5.1	5.7	10.8	6.6	* 4.3	3.0
March	* 0.6	3.9	4.5	1.5	6.0	* 16.6	5.5	6.0	8.8	6.6	* 4.3	3.3
April	* 0.2	2.7	3.0	1.5	4.5	* 7.7	3.9	4.0	8.9	4.9	* 1.7	2.3
May	* 0.4	2.7	3.1	* 1.2	4.3	* 13.4	3.8	4.2	* 6.5	4.7	* 3.3	2.2
AUSTRALIAN CAPITAL TERRITORY												
1997												
March	1.6	6.7	8.3	4.6	12.9	43.6	5.5	6.6	10.7	7.6	7.3	3.2
April	1.0	6.7	7.7	4.3	11.9	31.0	5.4	6.1	9.7	7.0	4.5	3.1
May	* 0.9	6.6	7.5	4.2	11.7	* 26.3	5.3	5.8	9.5	6.8	* 3.8	3.1
June	1.3	7.0	8.3	4.0	12.3	42.5	5.6	6.5	9.4	7.2	5.9	3.3
July	* 0.8	7.3	8.1	3.0	11.1	* 25.1	5.8	6.3	7.3	6.6	* 3.7	3.4
August	1.3	8.0	9.3	4.1	13.4	43.0	6.5	7.3	9.7	7.9	5.9	3.8
September	1.2	7.7	8.8	4.7	13.6	36.7	6.0	6.8	11.3	7.9	5.2	3.6
October	1.2	8.5	9.7	3.4	13.1	32.2	6.8	7.5	8.4	7.7	5.3	4.0
November	1.5	7.5	9.1	3.5	12.5	37.4	6.0	7.0	8.9	7.4	7.0	3.5
December	1.9	8.1	10.0	3.5	13.5	43.3	6.5	7.7	8.8	8.0	8.5	3.8
1998												
January	2.4	8.7	11.1	3.1	14.2	51.7	7.1	8.7	8.3	8.6	10.7	4.1
February	1.7	9.0	10.8	3.9	14.7	33.0	7.2	8.2	9.6	8.5	7.8	4.2
March	1.1	7.9	9.0	4.6	13.6	34.9	6.3	7.0	10.8	7.9	4.9	3.7
April	1.2	7.2	8.4	3.0	11.5	41.7	5.9	6.7	7.1	6.8	5.3	3.4
May	1.2	6.5	7.7	3.7	11.3	38.7	5.2	6.0	8.7	6.7	5.2	3.0

LABOUR FORCE STATUS (AGED 15 AND OVER)—New South Wales(a)

SEASONALLY ADJUSTED.....

TREND.....

Month	SEASONALLY ADJUSTED.....					TREND.....					Civilian population aged 15 and over '000
	Employed full time '000	Total employed '000	Total unemployed '000	Unemp-loyment rate %	Partic-ipation rate %	Employed full time '000	Total employed '000	Total unemployed '000	Unemp-loyment rate %	Partic-ipation rate %	
MALES											
1997											
March	1 437.8	1 607.1	141.5	8.1	72.5	1 426.0	1 604.2	143.2	8.2	72.4	2 413.0
April	1 424.3	1 608.7	142.3	8.1	72.5	1 423.0	1 602.9	143.3	8.2	72.3	2 415.6
May	1 414.0	1 599.1	145.7	8.4	72.2	1 419.6	1 600.3	143.3	8.2	72.1	2 418.1
June	1 422.5	1 602.1	132.3	7.6	71.6	1 417.1	1 597.3	143.5	8.2	71.9	2 420.7
July	1 414.8	1 598.2	154.9	8.8	72.3	1 416.7	1 595.2	144.2	8.3	71.8	2 423.6
August	1 406.2	1 577.9	141.7	8.2	70.9	1 419.0	1 595.5	144.5	8.3	71.7	2 426.5
September	1 428.1	1 603.8	143.2	8.2	71.9	1 423.4	1 598.6	143.9	8.3	71.7	2 429.3
October	1 430.7	1 598.9	145.0	8.3	71.7	1 428.3	1 603.8	142.4	8.2	71.8	2 432.3
November	1 437.7	1 614.8	143.6	8.2	72.2	1 432.1	1 609.3	140.1	8.0	71.8	2 435.2
December	1 435.0	1 618.6	132.8	7.6	71.8	1 434.4	1 613.4	137.7	7.9	71.8	2 438.1
1998											
January	1 438.5	1 627.1	129.8	7.4	72.0	1 435.4	1 615.4	135.7	7.7	71.8	2 440.3
February	1 425.9	1 597.8	141.0	8.1	71.2	1 435.9	1 615.8	134.2	7.7	71.6	2 442.4
March	1 436.0	1 616.6	135.0	7.7	71.7	1 436.9	1 615.9	133.1	7.6	71.5	2 444.6
April	1 444.6	1 621.4	125.7	7.2	71.4	1 438.4	1 616.4	132.2	7.6	71.5	2 447.3
May	1 440.5	1 616.7	135.3	7.7	71.5	1 439.6	1 616.3	131.8	7.5	71.3	2 450.1
FEMALES											
1997											
March	724.5	1 208.3	99.9	7.6	52.3	726.8	1 209.6	102.8	7.8	52.4	2 502.5
April	730.4	1 214.1	103.1	7.8	52.6	725.0	1 207.0	103.1	7.9	52.3	2 505.3
May	725.7	1 204.3	104.9	8.0	52.2	723.2	1 204.1	102.6	7.9	52.1	2 508.0
June	712.1	1 188.4	100.3	7.8	51.3	721.5	1 201.2	101.7	7.8	51.9	2 510.7
July	725.6	1 207.5	100.5	7.7	52.0	720.1	1 199.7	100.8	7.7	51.7	2 513.6
August	717.5	1 196.5	100.5	7.8	51.5	719.4	1 200.2	99.6	7.7	51.7	2 516.5
September	719.8	1 211.4	97.1	7.4	51.9	719.0	1 202.6	98.5	7.6	51.6	2 519.4
October	716.5	1 188.8	99.1	7.7	51.1	718.7	1 205.8	97.4	7.5	51.7	2 522.1
November	722.4	1 217.1	95.1	7.2	52.0	718.2	1 209.0	96.5	7.4	51.7	2 524.7
December	715.8	1 218.0	95.2	7.2	52.0	717.4	1 211.6	95.8	7.3	51.7	2 527.4
1998											
January	720.2	1 216.2	97.3	7.4	51.9	716.7	1 213.9	95.4	7.3	51.8	2 529.3
February	708.5	1 207.6	93.5	7.2	51.4	716.2	1 216.0	95.3	7.3	51.8	2 531.1
March	717.7	1 213.7	95.7	7.3	51.7	715.8	1 217.8	95.3	7.3	51.8	2 533.0
April	720.1	1 229.0	94.8	7.2	52.2	715.6	1 219.7	95.3	7.2	51.9	2 535.3
May	713.2	1 218.8	96.6	7.3	51.8	715.3	1 220.0	95.6	7.3	51.8	2 537.7
PERSONS											
1997											
March	2 162.2	2 815.4	241.3	7.9	62.2	2 152.9	2 813.8	246.0	8.0	62.2	4 915.5
April	2 154.7	2 822.9	245.5	8.0	62.4	2 148.0	2 809.9	246.4	8.1	62.1	4 920.8
May	2 139.6	2 803.3	250.6	8.2	62.0	2 142.8	2 804.4	245.9	8.1	61.9	4 926.1
June	2 134.6	2 790.4	232.6	7.7	61.3	2 138.6	2 798.5	245.3	8.1	61.7	4 931.4
July	2 140.4	2 805.7	255.4	8.3	62.0	2 136.9	2 794.9	244.9	8.1	61.6	4 937.2
August	2 123.7	2 774.4	242.2	8.0	61.0	2 138.4	2 795.7	244.1	8.0	61.5	4 942.9
September	2 147.9	2 815.2	240.2	7.9	61.7	2 142.4	2 801.2	242.4	8.0	61.5	4 948.7
October	2 147.2	2 787.7	244.1	8.1	61.2	2 147.1	2 809.6	239.7	7.9	61.5	4 954.3
November	2 160.1	2 831.9	238.7	7.8	61.9	2 150.4	2 818.3	236.6	7.7	61.6	4 959.9
December	2 150.7	2 836.6	228.0	7.4	61.7	2 151.9	2 825.0	233.5	7.6	61.6	4 965.6
1998											
January	2 158.7	2 843.3	227.1	7.4	61.8	2 152.2	2 829.4	231.1	7.6	61.6	4 969.5
February	2 134.4	2 805.4	234.5	7.7	61.1	2 152.1	2 831.7	229.5	7.5	61.5	4 973.5
March	2 153.7	2 830.3	230.7	7.5	61.5	2 152.7	2 833.7	228.3	7.5	61.5	4 977.5
April	2 164.8	2 850.4	220.5	7.2	61.6	2 154.0	2 836.1	227.5	7.4	61.5	4 982.7
May	2 153.7	2 835.4	231.9	7.6	61.5	2 154.9	2 836.2	227.4	7.4	61.4	4 987.8

(a) Trend estimates for November 1997 to April 1998 have been revised.

LABOUR FORCE STATUS (AGED 15 AND OVER)–Victoria(a)

SEASONALLY ADJUSTED.....

TREND.....

Month	SEASONALLY ADJUSTED.....					TREND.....					Civilian population aged 15 and over '000
	Employed full time '000	Total employed '000	Total unemployed '000	Unemp-loyment rate %	Partic-ipation rate %	Employed full time '000	Total employed '000	Total unemployed '000	Unemp-loyment rate %	Partic-ipation rate %	
MALES											
1997											
March	1 042.7	1 186.0	122.2	9.3	73.8	1 044.9	1 185.7	120.1	9.2	73.7	1 772.9
April	1 042.9	1 186.8	120.9	9.2	73.7	1 042.4	1 184.4	120.6	9.2	73.5	1 774.8
May	1 041.6	1 182.8	117.2	9.0	73.2	1 039.8	1 183.3	120.8	9.3	73.4	1 776.7
June	1 035.4	1 182.7	123.5	9.5	73.4	1 037.7	1 182.8	120.4	9.2	73.3	1 778.6
July	1 039.7	1 185.2	118.6	9.1	73.2	1 036.5	1 183.3	118.9	9.1	73.1	1 780.6
August	1 034.0	1 177.7	117.8	9.1	72.7	1 036.8	1 185.1	116.7	9.0	73.0	1 782.5
September	1 034.8	1 188.2	118.9	9.1	73.3	1 038.6	1 187.7	114.3	8.8	73.0	1 784.5
October	1 043.5	1 195.6	105.0	8.1	72.8	1 042.0	1 190.9	111.9	8.6	72.9	1 786.5
November	1 048.5	1 194.4	109.0	8.4	72.9	1 046.7	1 194.0	110.3	8.5	72.9	1 788.4
December	1 049.6	1 200.6	110.5	8.4	73.2	1 051.4	1 197.1	109.7	8.4	73.0	1 790.4
1998											
January	1 056.5	1 193.3	114.0	8.7	72.9	1 055.3	1 200.3	110.1	8.4	73.1	1 792.2
February	1 061.3	1 203.5	105.5	8.1	73.0	1 058.1	1 203.7	110.9	8.4	73.3	1 794.0
March	1 061.3	1 208.2	114.5	8.7	73.7	1 060.1	1 207.4	111.5	8.5	73.4	1 795.8
April	1 059.2	1 213.2	112.8	8.5	73.7	1 061.3	1 211.2	112.1	8.5	73.6	1 798.0
May	1 060.5	1 217.0	111.2	8.4	73.8	1 062.0	1 214.6	112.2	8.5	73.7	1 800.1
FEMALES											
1997											
March	506.1	904.9	89.7	9.0	53.7	510.3	912.1	89.9	9.0	54.1	1 851.1
April	510.0	913.8	91.3	9.1	54.2	509.6	910.5	90.9	9.1	54.0	1 853.1
May	506.8	904.9	94.3	9.4	53.9	509.4	908.8	91.8	9.2	53.9	1 855.1
June	515.3	914.9	92.4	9.2	54.2	509.3	907.7	92.3	9.2	53.8	1 857.1
July	510.0	908.5	88.9	8.9	53.7	509.3	907.6	91.7	9.2	53.8	1 859.0
August	504.4	896.3	93.4	9.4	53.2	509.4	909.0	90.3	9.0	53.7	1 861.0
September	512.4	917.9	87.2	8.7	54.0	509.8	911.6	88.4	8.8	53.7	1 862.9
October	512.1	913.2	87.9	8.8	53.7	510.9	914.9	86.2	8.6	53.7	1 864.8
November	508.3	921.0	84.4	8.4	53.9	513.2	918.6	84.4	8.4	53.7	1 866.8
December	519.6	924.9	79.1	7.9	53.7	516.7	922.0	83.3	8.3	53.8	1 868.7
1998											
January	517.6	923.5	85.3	8.5	53.9	520.7	924.9	82.9	8.2	53.9	1 870.5
February	527.7	925.7	79.3	7.9	53.7	524.4	927.1	83.0	8.2	54.0	1 872.2
March	525.5	926.4	87.7	8.6	54.1	527.6	929.3	83.3	8.2	54.0	1 873.9
April	537.7	936.9	84.4	8.3	54.4	530.1	931.5	83.4	8.2	54.1	1 876.2
May	525.8	932.2	81.2	8.0	53.9	532.0	933.0	83.6	8.2	54.1	1 878.4
PERSONS											
1997											
March	1 548.8	2 090.9	211.9	9.2	63.5	1 555.2	2 097.8	210.0	9.1	63.7	3 624.0
April	1 552.9	2 100.7	212.3	9.2	63.8	1 552.0	2 094.9	211.4	9.2	63.6	3 627.9
May	1 548.4	2 087.7	211.6	9.2	63.3	1 549.2	2 092.1	212.7	9.2	63.5	3 631.8
June	1 550.7	2 097.6	215.9	9.3	63.6	1 547.0	2 090.4	212.7	9.2	63.3	3 635.7
July	1 549.7	2 093.7	207.5	9.0	63.2	1 545.8	2 090.9	210.6	9.1	63.2	3 639.6
August	1 538.4	2 074.1	211.2	9.2	62.7	1 546.2	2 094.2	207.0	9.0	63.2	3 643.5
September	1 547.1	2 106.2	206.2	8.9	63.4	1 548.4	2 099.3	202.6	8.8	63.1	3 647.4
October	1 555.5	2 108.7	192.8	8.4	63.0	1 552.9	2 105.7	198.2	8.6	63.1	3 651.3
November	1 556.8	2 115.4	193.4	8.4	63.2	1 559.9	2 112.6	194.7	8.4	63.1	3 655.2
December	1 569.2	2 125.5	189.6	8.2	63.3	1 568.1	2 119.1	193.1	8.4	63.2	3 659.2
1998											
January	1 574.1	2 116.8	199.3	8.6	63.2	1 576.0	2 125.2	193.1	8.3	63.3	3 662.7
February	1 589.0	2 129.2	184.8	8.0	63.1	1 582.5	2 130.7	193.9	8.3	63.4	3 666.2
March	1 586.8	2 134.6	202.2	8.7	63.7	1 587.6	2 136.7	194.8	8.4	63.5	3 669.7
April	1 596.9	2 150.1	197.2	8.4	63.9	1 591.4	2 142.7	195.5	8.4	63.6	3 674.1
May	1 586.3	2 149.2	192.4	8.2	63.7	1 594.0	2 147.7	195.7	8.4	63.7	3 678.5

(a) Trend estimates for November 1997 to April 1998 have been revised.

LABOUR FORCE STATUS (AGED 15 AND OVER)–Queensland(a)

SEASONALLY ADJUSTED.....

TREND.....

Month	SEASONALLY ADJUSTED.....					TREND.....					Civilian population aged 15 and over '000
	Employed full time '000	Total employed '000	Total unemployed '000	Unemployment rate %	Participation rate %	Employed full time '000	Total employed '000	Total unemployed '000	Unemployment rate %	Participation rate %	
MALES											
1997											
March	764.5	871.0	102.8	10.6	73.9	769.9	875.7	98.0	10.1	73.9	1 317.4
April	767.2	875.2	97.2	10.0	73.7	769.6	876.3	97.6	10.0	73.8	1 319.7
May	771.9	879.3	96.7	9.9	73.8	771.1	878.5	96.4	9.9	73.8	1 321.9
June	769.7	883.9	89.4	9.2	73.5	773.7	881.8	95.1	9.7	73.8	1 324.1
July	787.6	887.9	95.7	9.7	74.2	776.2	885.2	94.5	9.6	73.9	1 326.2
August	775.7	887.3	96.3	9.8	74.1	778.1	888.3	94.3	9.6	74.0	1 328.2
September	776.4	886.6	94.6	9.6	73.8	779.6	891.4	94.5	9.6	74.1	1 330.3
October	782.9	900.4	92.8	9.3	74.5	781.1	894.9	94.6	9.6	74.2	1 332.8
November	780.9	895.4	95.2	9.6	74.2	783.6	898.8	94.1	9.5	74.4	1 335.4
December	783.2	899.8	94.6	9.5	74.3	786.9	902.7	92.9	9.3	74.4	1 338.0
1998											
January	795.7	910.8	89.2	8.9	74.6	790.3	905.8	91.5	9.2	74.4	1 340.1
February	792.4	909.1	93.2	9.3	74.7	792.9	907.9	90.0	9.0	74.3	1 342.3
March	797.5	911.3	85.9	8.6	74.2	794.4	909.1	88.6	8.9	74.2	1 344.4
April	797.9	906.7	85.8	8.6	73.7	795.0	909.7	87.4	8.8	74.0	1 346.6
May	787.4	908.0	88.3	8.9	73.9	795.1	910.2	86.4	8.7	73.9	1 348.8
FEMALES											
1997											
March	377.4	669.4	66.0	9.0	54.8	375.7	670.0	68.7	9.3	55.1	1 341.9
April	377.2	671.9	66.5	9.0	54.9	375.2	672.2	67.7	9.1	55.0	1 344.1
May	375.5	670.6	70.4	9.5	55.0	375.0	674.3	67.0	9.0	55.1	1 346.4
June	366.2	678.6	65.2	8.8	55.1	375.3	676.7	66.9	9.0	55.1	1 348.6
July	380.6	681.7	64.5	8.6	55.2	376.5	679.5	67.3	9.0	55.3	1 350.8
August	383.1	679.5	69.7	9.3	55.4	378.6	682.3	67.7	9.0	55.4	1 352.9
September	379.0	683.8	68.4	9.1	55.5	381.6	685.0	67.8	9.0	55.6	1 355.1
October	381.0	691.7	68.4	9.0	56.0	384.4	687.2	67.6	9.0	55.6	1 357.6
November	386.2	690.3	67.5	8.9	55.7	386.8	689.1	67.0	8.9	55.6	1 360.1
December	397.7	688.0	64.4	8.6	55.2	388.5	691.3	66.1	8.7	55.6	1 362.7
1998											
January	384.9	690.5	64.9	8.6	55.4	389.8	693.8	64.8	8.5	55.6	1 364.7
February	392.4	702.0	65.2	8.5	56.1	390.8	696.8	63.7	8.4	55.6	1 366.7
March	385.4	695.5	60.4	8.0	55.2	391.5	700.0	62.7	8.2	55.7	1 368.7
April	398.8	705.8	64.1	8.3	56.2	392.0	703.1	61.8	8.1	55.8	1 370.8
May	390.2	708.1	59.3	7.7	55.9	392.2	706.1	61.0	8.0	55.9	1 373.0
PERSONS											
1997											
March	1 141.9	1 540.3	168.8	9.9	64.3	1 145.6	1 545.7	166.7	9.7	64.4	2 659.3
April	1 144.4	1 547.2	163.8	9.6	64.2	1 144.8	1 548.6	165.3	9.6	64.3	2 663.8
May	1 147.4	1 549.9	167.1	9.7	64.4	1 146.1	1 552.8	163.4	9.5	64.3	2 668.3
June	1 135.9	1 562.4	154.6	9.0	64.2	1 149.0	1 558.5	162.0	9.4	64.4	2 672.8
July	1 168.2	1 569.6	160.2	9.3	64.6	1 152.7	1 564.7	161.7	9.4	64.5	2 676.9
August	1 158.8	1 566.8	166.0	9.6	64.6	1 156.7	1 570.6	162.0	9.4	64.6	2 681.1
September	1 155.3	1 570.4	163.0	9.4	64.6	1 161.1	1 576.4	162.3	9.3	64.7	2 685.3
October	1 163.9	1 592.1	161.2	9.2	65.2	1 165.5	1 582.0	162.2	9.3	64.8	2 690.4
November	1 167.1	1 585.6	162.8	9.3	64.9	1 170.5	1 588.0	161.1	9.2	64.9	2 695.5
December	1 180.9	1 587.8	159.0	9.1	64.7	1 175.5	1 593.9	159.0	9.1	64.9	2 700.6
1998											
January	1 180.6	1 601.3	154.2	8.8	64.9	1 180.2	1 599.7	156.3	8.9	64.9	2 704.8
February	1 184.8	1 611.1	158.3	8.9	65.3	1 183.7	1 604.7	153.7	8.7	64.9	2 709.0
March	1 182.9	1 606.9	146.4	8.3	64.6	1 185.9	1 609.1	151.3	8.6	64.9	2 713.1
April	1 196.7	1 612.5	149.9	8.5	64.9	1 187.0	1 612.8	149.2	8.5	64.8	2 717.5
May	1 177.6	1 616.1	147.6	8.4	64.8	1 187.3	1 616.2	147.4	8.4	64.8	2 721.8

(a) Trend estimates for November 1997 to April 1998 have been revised.

LABOUR FORCE STATUS (AGED 15 AND OVER)--South Australia(a)

SEASONALLY ADJUSTED.....

TREND.....

Month	SEASONALLY ADJUSTED.....					TREND.....					Civilian population aged 15 and over '000
	Employed full time '000	Total employed '000	Total unemployed '000	Unemp- loyment rate %	Partic- ipation rate %	Employed full time '000	Total employed '000	Total unemployed '000	Unemp- loyment rate %	Partic- ipation rate %	
MALES											
1997											
March	320.8	371.9	41.9	10.1	71.3	321.2	370.2	42.6	10.3	71.1	580.5
April	322.1	369.2	44.0	10.7	71.1	321.6	370.9	43.0	10.4	71.3	580.8
May	319.0	370.8	44.5	10.7	71.5	322.3	371.9	43.3	10.4	71.4	581.1
June	324.8	374.4	42.6	10.2	71.7	323.3	373.0	43.4	10.4	71.6	581.5
July	325.0	373.2	43.3	10.4	71.6	324.1	373.9	43.4	10.4	71.7	581.9
August	325.6	375.3	42.6	10.2	71.8	324.6	374.5	43.4	10.4	71.8	582.3
September	324.8	375.4	43.8	10.4	71.9	324.8	374.7	43.4	10.4	71.7	582.7
October	323.3	374.0	43.6	10.4	71.6	324.7	374.2	43.4	10.4	71.6	583.1
November	323.6	372.8	43.8	10.5	71.4	324.2	373.1	43.4	10.4	71.4	583.6
December	323.5	371.9	43.0	10.4	71.1	323.4	371.9	43.2	10.4	71.1	584.0
1998											
January	325.9	370.8	42.3	10.2	70.7	322.4	370.6	42.8	10.4	70.7	584.3
February	318.6	369.4	43.6	10.6	70.6	321.2	369.3	42.3	10.3	70.4	584.5
March	319.5	366.1	42.0	10.3	69.8	319.8	368.1	41.9	10.2	70.1	584.8
April	319.6	369.6	39.3	9.6	69.9	318.4	367.0	41.6	10.2	69.8	585.1
May	315.4	364.3	42.9	10.5	69.6	317.2	366.1	41.4	10.2	69.6	585.4
FEMALES											
1997											
March	150.1	294.2	28.0	8.7	53.6	150.5	292.3	27.2	8.5	53.2	601.2
April	150.5	291.7	27.0	8.5	53.0	150.7	291.5	27.4	8.6	53.0	601.5
May	149.1	288.4	26.6	8.5	52.3	150.3	290.3	27.5	8.7	52.8	601.8
June	152.8	289.4	28.2	8.9	52.7	149.4	289.1	27.6	8.7	52.6	602.2
July	148.9	287.8	28.5	9.0	52.5	148.3	288.4	27.7	8.8	52.5	602.6
August	145.4	287.1	27.4	8.7	52.2	147.1	288.3	27.8	8.8	52.4	602.9
September	144.8	288.1	28.0	8.9	52.4	146.2	288.3	27.8	8.8	52.4	603.3
October	145.2	289.5	27.3	8.6	52.5	145.8	288.1	27.9	8.8	52.3	603.7
November	146.5	288.8	28.2	8.9	52.5	146.1	287.2	28.0	8.9	52.2	604.1
December	148.2	285.3	27.6	8.8	51.8	146.9	285.7	28.3	9.0	51.9	604.5
1998											
January	147.1	283.2	30.1	9.6	51.8	147.5	283.7	28.7	9.2	51.6	604.8
February	146.2	281.3	28.1	9.1	51.1	147.6	281.4	29.0	9.4	51.3	605.1
March	150.1	278.3	30.3	9.8	51.0	147.3	279.3	29.4	9.5	51.0	605.3
April	147.9	279.1	28.2	9.2	50.7	146.8	277.3	29.7	9.7	50.7	605.6
May	142.6	273.8	31.0	10.2	50.3	146.1	275.7	29.9	9.8	50.4	605.9
PERSONS											
1997											
March	470.9	666.1	69.9	9.5	62.3	471.7	662.5	69.9	9.5	62.0	1 181.7
April	472.7	660.8	71.0	9.7	61.9	472.2	662.4	70.4	9.6	62.0	1 182.3
May	468.2	659.2	71.1	9.7	61.7	472.6	662.2	70.8	9.7	62.0	1 183.0
June	477.6	663.8	70.8	9.6	62.1	472.7	662.0	71.1	9.7	61.9	1 183.6
July	473.9	661.1	71.8	9.8	61.9	472.3	662.3	71.2	9.7	61.9	1 184.4
August	471.0	662.4	70.0	9.6	61.8	471.7	662.8	71.1	9.7	61.9	1 185.2
September	469.5	663.5	71.8	9.8	62.0	471.0	663.0	71.1	9.7	61.9	1 186.0
October	468.5	663.5	70.9	9.6	61.9	470.5	662.2	71.3	9.7	61.8	1 186.9
November	470.2	661.6	72.0	9.8	61.8	470.3	660.4	71.5	9.8	61.6	1 187.7
December	471.7	657.3	70.6	9.7	61.2	470.3	657.6	71.5	9.8	61.3	1 188.5
1998											
January	473.0	654.0	72.4	10.0	61.1	469.9	654.2	71.5	9.9	61.0	1 189.1
February	464.9	650.7	71.7	9.9	60.7	468.8	650.7	71.4	9.9	60.7	1 189.6
March	469.6	644.4	72.3	10.1	60.2	467.1	647.3	71.3	9.9	60.4	1 190.1
April	467.6	648.7	67.4	9.4	60.1	465.2	644.3	71.3	10.0	60.1	1 190.7
May	458.0	638.2	73.9	10.4	59.8	463.3	641.8	71.3	10.0	59.9	1 191.3

(a) Trend estimates for November 1997 to April 1998 have been revised.

LABOUR FORCE STATUS (AGED 15 AND OVER)–Western Australia(a)

SEASONALLY ADJUSTED.....

TREND.....

Month	SEASONALLY ADJUSTED.....					TREND.....					Civilian population aged 15 and over '000
	Employed full time '000	Total employed '000	Total unemployed '000	Unemp-loyment rate %	Partic-ipation rate %	Employed full time '000	Total employed '000	Total unemployed '000	Unemp-loyment rate %	Partic-ipation rate %	
MALES											
1997											
March	433.4	490.0	37.4	7.1	76.1	434.4	490.7	37.3	7.1	76.2	693.2
April	434.8	490.4	36.7	7.0	75.9	435.4	491.6	37.4	7.1	76.2	694.5
May	436.2	492.1	37.6	7.1	76.1	436.4	492.4	37.8	7.1	76.2	695.9
June	437.5	495.3	38.2	7.2	76.5	437.5	493.2	38.2	7.2	76.2	697.1
July	438.4	491.7	39.4	7.4	76.0	438.6	494.4	38.4	7.2	76.3	698.4
August	440.5	497.4	38.9	7.3	76.6	439.9	496.1	38.4	7.2	76.4	699.8
September	442.2	497.1	39.9	7.4	76.6	441.3	497.8	38.1	7.1	76.4	701.1
October	439.9	498.7	33.6	6.3	75.8	442.5	499.5	37.8	7.0	76.5	702.4
November	443.7	501.7	38.2	7.1	76.7	443.5	500.7	37.4	7.0	76.5	703.8
December	445.5	502.7	38.7	7.1	76.8	444.0	501.4	37.2	6.9	76.4	705.1
1998											
January	447.0	503.0	37.2	6.9	76.5	444.0	501.6	37.2	6.9	76.3	706.1
February	441.0	500.2	36.3	6.8	75.9	443.8	501.7	37.2	6.9	76.2	707.1
March	443.0	499.9	37.9	7.0	75.9	443.5	501.8	37.1	6.9	76.1	708.1
April	443.1	502.2	36.0	6.7	75.9	443.2	502.1	37.1	6.9	76.0	709.1
May	443.4	504.3	37.7	7.0	76.3	442.8	502.3	36.9	6.8	75.9	710.1
FEMALES											
1997											
March	189.2	360.3	31.1	7.9	55.9	190.8	360.5	30.7	7.9	55.9	700.3
April	190.8	358.0	31.3	8.0	55.5	190.2	359.1	29.9	7.7	55.4	701.6
May	192.0	356.9	26.2	6.8	54.5	190.7	358.8	28.8	7.4	55.1	702.9
June	188.0	358.2	27.7	7.2	54.8	192.2	360.2	27.8	7.2	55.1	704.2
July	196.7	362.7	26.9	6.9	55.2	194.0	362.5	27.0	6.9	55.2	705.5
August	195.7	363.2	28.6	7.3	55.4	195.7	364.8	26.7	6.8	55.4	706.8
September	199.4	374.3	25.4	6.3	56.4	197.0	366.5	26.7	6.8	55.5	708.0
October	196.6	367.1	26.6	6.7	55.5	197.9	367.3	27.0	6.9	55.6	709.3
November	197.7	365.7	26.7	6.8	55.2	198.4	367.4	27.5	7.0	55.6	710.6
December	197.6	364.5	29.1	7.4	55.3	198.6	367.5	28.0	7.1	55.6	711.8
1998											
January	201.8	367.5	29.2	7.4	55.7	198.8	368.3	28.5	7.2	55.7	712.8
February	195.4	372.1	28.9	7.2	56.2	199.0	369.9	28.7	7.2	55.9	713.7
March	202.7	371.0	28.0	7.0	55.8	199.1	372.1	28.7	7.2	56.1	714.7
April	196.6	373.7	28.8	7.2	56.3	199.2	374.4	28.6	7.1	56.3	715.5
May	199.8	379.3	28.0	6.9	56.9	199.2	376.4	28.5	7.0	56.5	716.4
PERSONS											
1997											
March	622.6	850.4	68.5	7.5	65.9	625.2	851.1	68.1	7.4	66.0	1 393.5
April	625.7	848.4	68.0	7.4	65.6	625.6	850.7	67.3	7.3	65.8	1 396.1
May	628.2	849.0	63.8	7.0	65.3	627.1	851.2	66.6	7.3	65.6	1 398.8
June	625.5	853.5	65.9	7.2	65.6	629.7	853.3	66.0	7.2	65.6	1 401.4
July	635.1	854.4	66.3	7.2	65.6	632.6	856.9	65.5	7.1	65.7	1 403.9
August	636.3	860.6	67.5	7.3	66.0	635.7	860.9	65.0	7.0	65.8	1 406.5
September	641.6	871.4	65.3	7.0	66.5	638.3	864.4	64.8	7.0	65.9	1 409.1
October	636.5	865.8	60.2	6.5	65.6	640.4	866.8	64.8	7.0	66.0	1 411.7
November	641.4	867.4	64.9	7.0	65.9	641.9	868.1	65.0	7.0	66.0	1 414.3
December	643.1	867.2	67.8	7.2	66.0	642.6	868.9	65.3	7.0	65.9	1 416.9
1998											
January	648.8	870.5	66.4	7.1	66.0	642.8	869.9	65.6	7.0	65.9	1 418.9
February	636.4	872.3	65.2	7.0	66.0	642.8	871.6	65.9	7.0	66.0	1 420.8
March	645.7	870.8	65.9	7.0	65.8	642.6	874.0	65.8	7.0	66.1	1 422.8
April	639.8	875.9	64.8	6.9	66.0	642.5	876.5	65.7	7.0	66.1	1 424.7
May	643.2	883.7	65.8	6.9	66.6	642.0	878.7	65.4	6.9	66.2	1 426.5

(a) Trend estimates for November 1997 to April 1998 have been revised.

LABOUR FORCE STATUS (AGED 15 AND OVER)–Tasmania(a)

SEASONALLY ADJUSTED.....

TREND.....

Month	SEASONALLY ADJUSTED.....					TREND.....					Civilian population aged 15 and over '000
	Employed full time '000	Total employed '000	Total unemployed '000	Unemployment rate %	Participation rate %	Employed full time '000	Total employed '000	Total unemployed '000	Unemployment rate %	Participation rate %	
MALES											
1997											
March	98.5	113.1	14.1	11.1	70.0	98.2	112.3	14.2	11.2	69.6	181.6
April	97.4	111.5	14.9	11.8	69.6	97.7	111.9	14.2	11.3	69.4	181.6
May	97.8	112.2	13.5	10.7	69.2	97.3	111.7	14.2	11.3	69.3	181.7
June	96.8	110.9	13.8	11.1	68.6	97.2	111.7	14.2	11.3	69.2	181.7
July	96.3	110.9	15.2	12.1	69.4	97.2	111.8	14.2	11.3	69.3	181.7
August	97.4	112.5	14.5	11.4	69.8	97.4	111.9	14.5	11.5	69.5	181.8
September	97.8	112.7	13.5	10.7	69.4	97.5	112.0	14.8	11.7	69.7	181.8
October	99.3	112.4	15.6	12.2	70.4	97.5	111.9	15.2	12.0	69.9	181.8
November	96.6	111.9	15.6	12.3	70.2	97.2	111.7	15.5	12.2	70.0	181.8
December	96.2	109.9	16.9	13.3	69.7	96.8	111.6	15.7	12.3	70.0	181.8
1998											
January	96.6	112.2	15.2	11.9	70.1	96.5	111.6	15.7	12.3	70.0	181.7
February	95.4	112.0	14.7	11.6	69.8	96.4	111.8	15.5	12.2	70.1	181.6
March	96.4	111.2	16.1	12.6	70.1	96.4	112.1	15.3	12.0	70.2	181.5
April	98.2	113.5	14.8	11.6	70.7	96.5	112.5	15.0	11.8	70.2	181.4
May	96.0	112.8	14.4	11.3	70.2	96.7	112.8	14.8	11.6	70.4	181.3
FEMALES											
1997											
March	40.7	82.6	9.5	10.3	49.0	41.0	82.7	9.2	10.0	49.0	187.8
April	41.2	82.4	8.9	9.8	48.6	40.7	82.2	9.2	10.1	48.7	187.8
May	42.1	82.2	9.4	10.2	48.7	40.2	81.6	9.3	10.3	48.4	187.9
June	39.2	80.0	9.9	11.0	47.8	39.7	81.0	9.5	10.5	48.2	187.9
July	38.2	80.5	8.7	9.7	47.4	39.3	80.5	9.8	10.8	48.0	187.9
August	38.6	81.7	10.0	10.9	48.8	39.2	80.3	9.9	11.0	48.0	187.9
September	39.1	78.5	11.4	12.7	47.8	39.5	80.4	9.9	10.9	48.0	188.0
October	40.7	80.9	9.5	10.5	48.1	40.3	80.9	9.6	10.6	48.1	188.0
November	42.0	82.5	8.8	9.6	48.6	41.3	81.6	9.2	10.1	48.3	188.0
December	41.8	82.5	8.6	9.4	48.4	42.2	82.4	8.7	9.6	48.5	188.0
1998											
January	42.9	82.3	8.2	9.1	48.2	42.7	83.3	8.4	9.2	48.8	187.9
February	42.8	84.8	7.9	8.5	49.4	42.9	84.0	8.2	8.9	49.1	187.8
March	43.9	84.8	8.4	9.0	49.7	42.9	84.7	8.2	8.8	49.5	187.7
April	42.9	85.3	8.4	8.9	50.0	42.7	85.2	8.3	8.8	49.8	187.6
May	40.9	85.4	8.5	9.0	50.1	42.4	85.6	8.3	8.9	50.1	187.5
PERSONS											
1997											
March	139.2	195.7	23.6	10.7	59.4	139.2	195.0	23.4	10.7	59.1	369.4
April	138.6	193.9	23.8	10.9	58.9	138.4	194.1	23.4	10.8	58.9	369.5
May	139.9	194.4	22.8	10.5	58.8	137.5	193.3	23.5	10.9	58.7	369.5
June	136.0	190.9	23.7	11.0	58.1	136.9	192.6	23.7	11.0	58.5	369.6
July	134.6	191.3	23.9	11.1	58.2	136.5	192.2	24.0	11.1	58.5	369.7
August	136.0	194.2	24.5	11.2	59.1	136.6	192.2	24.4	11.3	58.6	369.7
September	136.9	191.2	24.9	11.5	58.4	137.1	192.4	24.7	11.4	58.7	369.8
October	140.1	193.3	25.1	11.5	59.1	137.8	192.8	24.8	11.4	58.8	369.8
November	138.6	194.4	24.4	11.2	59.2	138.5	193.3	24.7	11.3	59.0	369.8
December	138.0	192.3	25.5	11.7	58.9	139.0	194.0	24.4	11.2	59.1	369.8
1998											
January	139.6	194.5	23.4	10.8	59.0	139.2	194.8	24.1	11.0	59.2	369.6
February	138.3	196.9	22.6	10.3	59.4	139.3	195.8	23.7	10.8	59.4	369.4
March	140.2	196.0	24.5	11.1	59.7	139.3	196.8	23.5	10.7	59.7	369.2
April	141.1	198.8	23.2	10.5	60.2	139.2	197.7	23.2	10.5	59.9	369.0
May	136.8	198.2	22.9	10.4	60.0	139.2	198.4	23.1	10.4	60.0	368.8

(a) Trend estimates for November 1997 to April 1998 have been revised.

LABOUR FORCE STATUS (AGED 15 AND OVER)–Northern Territory(a)

TREND.....

Month	Employed full time '000	Total employed '000	Total unemployed '000	Unemp- loyment rate %	Partic- ipation rate %	Civilian population aged 15 and over '000
MALES						
1997						
March	40.0	46.0	2.9	6.0	75.5	64.8
April	40.0	46.3	3.0	6.1	76.1	64.8
May	39.8	46.5	3.0	6.0	76.2	64.9
June	39.5	46.4	3.0	6.0	76.0	64.9
July	39.5	46.2	2.9	5.9	75.6	65.0
August	39.9	46.3	2.7	5.5	75.4	65.0
September	40.7	46.6	2.4	5.0	75.5	65.0
October	41.7	47.1	2.2	4.5	75.6	65.2
November	42.6	47.6	2.1	4.3	76.0	65.4
December	43.3	48.1	2.2	4.4	76.6	65.6
1998						
January	43.6	48.3	2.4	4.8	77.0	65.9
February	43.7	48.3	2.7	5.4	77.2	66.1
March	43.7	48.3	3.0	5.9	77.3	66.4
April	43.8	48.4	3.2	6.2	77.3	66.8
May	43.8	48.4	3.4	6.5	77.2	67.1
FEMALES						
1997						
March	23.6	37.7	2.3	5.8	63.0	63.5
April	23.8	38.2	2.4	5.9	63.8	63.6
May	24.0	38.5	2.4	5.9	64.2	63.7
June	24.2	38.7	2.3	5.6	64.2	63.8
July	24.8	38.8	2.1	5.0	63.9	63.9
August	25.5	38.9	1.8	4.5	63.6	64.0
September	26.4	39.0	1.7	4.1	63.6	64.1
October	27.1	39.2	1.7	4.1	63.7	64.2
November	27.5	39.4	1.7	4.2	63.8	64.4
December	27.3	39.3	1.8	4.5	63.8	64.5
1998						
January	27.0	39.2	1.9	4.7	63.6	64.6
February	26.6	39.0	1.9	4.7	63.3	64.7
March	26.6	38.9	1.9	4.6	62.9	64.8
April	26.7	38.9	1.8	4.5	62.7	64.9
May	26.9	39.0	1.7	4.2	62.7	65.1
PERSONS						
1997						
March	63.6	83.7	5.2	5.9	69.3	128.2
April	63.8	84.5	5.4	6.0	70.0	128.4
May	63.7	85.0	5.4	6.0	70.3	128.6
June	63.8	85.1	5.2	5.8	70.2	128.7
July	64.3	85.0	4.9	5.5	69.8	128.9
August	65.4	85.2	4.5	5.1	69.6	129.0
September	67.1	85.7	4.1	4.6	69.6	129.1
October	68.8	86.3	3.9	4.3	69.7	129.4
November	70.1	87.0	3.9	4.2	70.0	129.8
December	70.7	87.4	4.1	4.4	70.3	130.1
1998						
January	70.6	87.5	4.4	4.8	70.4	130.5
February	70.3	87.4	4.7	5.1	70.3	130.9
March	70.3	87.2	4.9	5.3	70.2	131.3
April	70.5	87.3	5.0	5.5	70.1	131.7
May	70.7	87.5	5.1	5.5	70.0	132.2

(a) Trend estimates for November 1997 to April 1998 have been revised. Estimates for the most recent three months may be subject to significant revisions as data for later months become available.

LABOUR FORCE STATUS (AGED 15 AND OVER)—Australian Capital Territory(a)

TREND.....

Month	Employed full time '000	Total employed '000	Total unemployed '000	Unemp- loyment rate %	Partic- ipation rate %	Civilian population aged 15 and over '000
MALES						
1997						
March	71.7	82.9	7.3	8.1	78.3	115.3
April	72.0	83.5	7.1	7.8	78.5	115.3
May	72.4	84.1	6.9	7.6	78.9	115.3
June	72.9	84.6	6.9	7.5	79.3	115.3
July	73.2	84.8	7.0	7.7	79.6	115.4
August	73.3	84.9	7.3	7.9	79.8	115.4
September	73.2	84.7	7.5	8.1	79.8	115.5
October	72.9	84.4	7.6	8.3	79.6	115.6
November	72.6	84.1	7.6	8.3	79.3	115.7
December	72.4	84.0	7.5	8.2	79.0	115.8
1998						
January	72.4	83.9	7.4	8.1	78.7	116.0
February	72.5	83.9	7.3	8.0	78.5	116.1
March	72.6	83.9	7.2	7.9	78.3	116.3
April	72.7	83.8	7.1	7.8	78.3	116.1
May	72.8	83.7	7.1	7.8	78.3	115.9
FEMALES						
1997						
March	46.3	73.9	5.0	6.4	66.1	119.4
April	46.9	74.4	5.1	6.5	66.6	119.4
May	47.1	74.4	5.5	6.8	66.9	119.4
June	47.0	73.9	5.8	7.3	66.7	119.4
July	46.9	73.2	6.1	7.7	66.4	119.4
August	46.9	72.4	6.3	8.0	65.9	119.4
September	46.9	71.7	6.3	8.1	65.4	119.3
October	46.8	71.3	6.3	8.1	64.9	119.5
November	46.6	71.1	6.1	7.9	64.6	119.6
December	46.4	71.4	5.8	7.6	64.5	119.7
1998						
January	46.3	72.0	5.5	7.1	64.6	119.8
February	46.2	72.6	5.2	6.7	64.9	119.9
March	46.3	73.3	4.9	6.3	65.2	120.0
April	46.4	73.9	4.7	6.0	65.6	119.9
May	46.5	74.4	4.6	5.8	65.9	119.8
PERSONS						
1997						
March	117.9	156.8	12.4	7.3	72.1	234.7
April	118.9	157.9	12.2	7.2	72.5	234.7
May	119.5	158.4	12.3	7.2	72.7	234.7
June	119.9	158.4	12.7	7.4	72.9	234.8
July	120.1	158.0	13.1	7.7	72.9	234.8
August	120.2	157.3	13.6	7.9	72.8	234.8
September	120.0	156.4	13.8	8.1	72.5	234.8
October	119.7	155.6	13.9	8.2	72.1	235.1
November	119.2	155.3	13.7	8.1	71.8	235.3
December	118.8	155.4	13.4	7.9	71.6	235.6
1998						
January	118.6	155.9	12.9	7.6	71.6	235.8
February	118.7	156.5	12.4	7.4	71.6	236.1
March	118.9	157.2	12.1	7.1	71.6	236.3
April	119.1	157.7	11.8	7.0	71.8	236.0
May	119.3	158.1	11.7	6.9	72.0	235.7

(a) Trend estimates for November 1997 to April 1998 have been revised.

Estimates for the most recent three months may be subject to significant revisions as data for later months become available.

EXPLANATORY NOTES

INTRODUCTION

1 This publication contains preliminary estimates of the civilian labour force derived from the Labour Force Survey component of the monthly population survey. Estimates for the current month are preliminary and subject to revision. Revised estimates for the current month and more detailed estimates will be published in *Labour Force, Australia* (6203.0).

MONTHLY POPULATION SURVEY

2 The population survey is based on a multi-stage area sample of private dwellings (currently about 30,000 houses, flats, etc.) and a list sample of non-private dwellings (hotels, motels, etc.), and covers about 0.5% of the population of Australia. The information is obtained from the occupants of selected dwellings by specially trained interviewers. The interviews are generally conducted during the two weeks beginning on the Monday between the 6th and 12th of each month. The information obtained relates to the week before the interview (i.e. the reference week).

TELEPHONE INTERVIEWING

3 The ABS has introduced the use of telephone interviewing into the Labour Force Survey. Households selected for the Labour Force Survey are interviewed each month for 8 months, with one eighth of the sample being replaced each month. The first interview is conducted face-to-face. Subsequent interviews are conducted by telephone (if acceptable to the respondent). Telephone interviewing was phased in for each new sample group from August 1996 to February 1997.

4 During the period of implementation, the new method produced different estimates than would have been obtained under the old methodology. The effect peaked in November 1996, when it is estimated that the published estimate of total employment was about 36,000 to 48,000 lower than would have been measured under the old methodology. The effect dissipated over the final months of implementation and was no longer discernible from February 1997. Therefore, the estimates for February 1997 and onwards are directly comparable to estimates for periods prior to August 1996.

SCOPE OF SURVEY

5 The Labour Force Survey includes all persons aged 15 and over except members of the permanent defence forces, certain diplomatic personnel of overseas governments customarily excluded from census and estimated populations, overseas residents in Australia, and members of non-Australian defence forces (and their dependants) stationed in Australia.

COVERAGE

6 In the Labour Force Survey, coverage rules are applied which aim to ensure that each person is associated with only one dwelling, and hence has only one chance of selection. The coverage rules are necessarily a balance between theoretical and operational considerations. Nevertheless, the chance of a person being enumerated at two separate dwellings in the survey is considered to be negligible.

POPULATION BENCHMARKS

7 Labour Force Survey estimates are calculated in such a way as to add up to independent estimates of the civilian population aged 15 and over (population benchmarks). From February 1994, labour force estimates have been compiled using benchmarks based on the results of the 1991 Census of Population and Housing. Small revisions were made to many of the historical estimates from January 1989 to January 1994.

REVISION OF SERIES

8 From April 1986, the definition of employed persons was changed to include persons who worked without pay between 1 and 14 hours per week in a family business or on a farm (i.e. contributing family workers). For further information, see paragraphs 36 and 37 of the Explanatory Notes to the February 1987 issue of *Labour Force, Australia* (6203.0).

EXPLANATORY NOTES

SURVEY SAMPLE REDESIGN

9 The Labour Force Survey sample has been reselected using information collected in the 1996 Census of Population and Housing.

10 The bulk of the new sample was phased in over the period September 1997 to April 1998, with one eighth of this portion of the sample being introduced every month. The remainder of the sample (about 15% of the total), which covers less settled areas of Australia and non-private dwellings was rotated in full for New South Wales, Victoria, Tasmania, Northern Territory and Australian Capital Territory in September 1997, and for Queensland, South Australia and Western Australia in October 1997. Such a pattern of implementation means that any changes to labour force estimates due to differences between the two samples, or any other influences, was spread over the eight months.

11 For further details, see *Information Paper: Labour Force Survey Sample Design* (6269.0).

RELIABILITY OF ESTIMATES

12 Two types of error are possible in an estimate based on a sample survey: sampling error and non-sampling error.

Sampling error occurs because a sample, rather than the entire population, is surveyed. One measure of the likely difference resulting from not including all dwellings in the survey is given by the standard error. There are about two chances in three that a sample estimate will differ by less than one standard error from the figure that would have been obtained if all dwellings had been included in the survey, and about nineteen chances in twenty that the difference will be less than two standard errors. Standard errors of estimates for the latest month and of estimates of movements since the previous month are shown on pages 30 and 31. Standard errors of other estimates and other movements may be determined by using information in the Technical Notes in *Labour Force, Australia* (6203.0).

Non sampling error arises from inaccuracies in collecting, recording and processing the data. Every effort is made to minimise reporting error by the careful design of questionnaires, intensive training and supervision of interviewers, and efficient data processing procedures.

SEASONAL ADJUSTMENT AND TREND ESTIMATION

13 Seasonally adjusted series are published in Tables 2, 5 and 12 to 17. Seasonal factors are reviewed annually to take account of each additional year's original data. The results of the latest review were used to compile the revised seasonally adjusted and trend estimates given in this publication. Information about the method of adjustment and revised seasonally adjusted and trend estimates for all months from January 1991 were published in an article in the February 1998 issue of *Labour Force, Australia* (6203.0).

14 Seasonal adjustment is a means of removing the estimated effects of normal seasonal variation from the series so that the effects of other influences on the series can be more clearly recognised. Seasonal adjustment does not aim to remove the irregular or non-seasonal influences which may be present in any particular month. This means that month-to-month movements of the seasonally adjusted estimates may not be reliable indicators of trend behaviour. For example, irregular factors unrelated to the trend account for more than half the seasonally adjusted movement with the following frequency:

Employment: 5 in 10 monthly movements

Unemployment: 7 in 10 monthly movements

Unemployment rate: 7 in 10 monthly movements

Participation rate: 9 in 10 monthly movements.

EXPLANATORY NOTES

SEASONAL ADJUSTMENT AND TREND ESTIMATION *continued*

15 The smoothing of seasonally adjusted series reduces the impact of the irregular component of the seasonally adjusted series, and creates trend estimates. These trend estimates are derived by applying a 13-term Henderson-weighted moving average to all months except the last six. The last six monthly trend estimates are obtained by applying surrogates of the Henderson average to the seasonally adjusted series. Trend series are used to analyse the underlying behaviour of the series over time. These are published in tables 3, 6 and 12 to 19.

16 While this smoothing technique enables estimates to be produced for the latest month, it does result in revisions to the most recent months as additional observations become available. Generally, subsequent revisions become smaller, and after three months have a negligible impact on the series. There will also be revisions as a result of the annual review of seasonal factors.

17 Trend estimates are published for the Northern Territory in table 18 and for the Australian Capital Territory in table 19. Unadjusted series for the two Territories have shown, historically, a high degree of variability, which can lead to considerable revisions to the seasonally adjusted estimates after each annual seasonal factor re-analysis. Seasonally adjusted estimates are not currently published for the two Territories. The most recent six months trend estimates are subject to revision. For the three most recent months, the revision may be relatively large. Inferences about trends drawn from smoothed seasonally adjusted (trend) estimates for months earlier than the latest three months are unlikely to be affected by month to month revisions. They may be affected by revision resulting from the annual re-analysis of seasonal factors.

18 For further information, see *A Guide to Interpreting Time Series — Monitoring 'Trends': an Overview* (1348.0) or contact the Assistant Director, Time Series Analysis on (02) 6252 6345.

RELATED PUBLICATIONS

19 Users may also wish to refer to *Labour Force, Australia* (6203.0). This publication contains a detailed list of related publications which are available from ABS Bookshops.

20 Current publications produced by the ABS are listed in the *Catalogue of Publications and Products* (1101.0). The ABS also issues, on Tuesdays and Fridays, a *Release Advice* (1105.0) which lists publications to be released in the next few days. The Catalogue and Release Advice are available from any ABS office.

UNPUBLISHED STATISTICS

21 As well as the statistics included in this and related publications, the ABS may have other relevant unpublished data available. Inquiries should be made to Matthew Paull on 02 6252 6525 or to any ABS office.

EFFECTS OF ROUNDING

22 Estimates have been rounded and discrepancies may occur between sums of the component items and totals.

23 Estimates of movement shown in this publication are obtained by taking the difference of unrounded estimates. The movement estimate is then rounded to one decimal place. Therefore where a discrepancy occurs between the reported movement and the difference of the rounded estimates, the reported movement will be more accurate.

SYMBOLS AND OTHER USAGES

- * subject to sampling variability too high for most practical uses. See the Technical Notes in 6203.0 for more details.
- .. not applicable
- r revised
- pts percentage points

GLOSSARY

Actively looking for work	Includes writing, telephoning or applying in person to an employer for work; answering an advertisement for a job; checking factory noticeboards or the touchscreens at Centrelink offices; being registered with Centrelink as a jobseeker; checking or registering with an employment agency; advertising or tendering for work; and contacting friends or relatives.
Attending school	Persons aged 15 to 19 enrolled full time at secondary or high schools in the reference week.
Attending tertiary educational institution full time	Persons aged 15 to 24 enrolled full time at a TAFE college, university, or other educational institution in the reference week.
Employed	Persons aged 15 and over who, during the reference week: <ul style="list-style-type: none">■ worked for one hour or more for pay, profit, commission or payment in kind in a job or business, or on a farm (comprising employees, employers and own account workers); or■ worked for one hour or more without pay in a family business or on a farm (i.e. contributing family workers); or■ were employees who had a job but were not at work and were:<ul style="list-style-type: none">■ on paid leave, on leave without pay for less than four weeks up to the end of the reference week,■ stood down without pay because of bad weather or plant breakdown at their place of employment for less than four weeks up to the end of the reference week,■ on strike or locked out,■ on workers' compensation and expected to be returning to their job, or■ receiving wages or salary while undertaking full-time study; or■ were employers, own account workers or contributing family workers who had a job, business or farm, but were not at work.
Full-time workers	Employed persons who usually worked 35 hours or more a week (in all jobs) and those who, although usually working less than 35 hours a week, worked 35 hours or more during the reference week
Labour force	For any group, persons who were employed or unemployed, as defined.
Labour force status	A classification of the civilian population aged 15 and over into employed, unemployed or not in the labour force, as defined. The definitions conform closely to the international standard definitions adopted by the International Conferences of Labour Statisticians.
Not in the labour force	Persons who were not in the categories employed or unemployed as defined.
Participation rate	For any group, the labour force expressed as a percentage of the civilian population aged 15 and over in the same group.
Part-time workers	Employed persons who usually worked less than 35 hours a week and who did so during the reference week.
Seasonally adjusted series	A time series of estimates with the estimated effects of normal seasonal variation removed. See Explanatory Note 13 to 14 for more detail.
Trend series	A smoothed seasonally adjusted series of estimates. See Explanatory Notes 15 to 17 for more detail.

GLOSSARY

Unemployed	Persons aged 15 and over who were not employed during the reference week, and: <ul style="list-style-type: none">■ had actively looked for full-time or part-time work at any time in the four weeks up to the end of the reference week and:<ul style="list-style-type: none">■ were available for work in the reference week, or would have been available except for temporary illness (i.e. lasting for less than four weeks to the end of the reference week), or■ were waiting to start a new job within four weeks from the end of the reference week and would have started in the reference week if the job had been available then; or■ were waiting to be called back to a full-time or part-time job from which they had been stood down without pay for less than four weeks up to the end of the reference week (including the whole of the reference week) for reasons other than bad weather or plant breakdown.
Unemployed looking for first full-time job	Unemployed persons looking for full-time work (as defined above) who had never worked full time for two weeks or more
Unemployed looking for full-time work	Unemployed persons who actively looked for full-time work, or were to resume a full-time job from which they had been stood down.
Unemployed looking for part-time work	Unemployed persons who had actively looked for part-time work only, or were to resume a part-time job from which they had been stood down.
Unemployment rate	For any group, the number of unemployed persons expressed as a percentage of the labour force in the same group.
Unemployment to population ratio	For any group, the number of unemployed persons expressed as a percentage of the civilian population in the same group.

STANDARD ERRORS

The estimates in this publication are based on information gained from the occupants of a sample survey of dwellings. Because the entire population is not surveyed, the published estimates are subject to sampling error. The most common way of quantifying such sampling error is to calculate the standard error for the published estimate or statistic.

LEVEL ESTIMATES

To illustrate, let us say the published level estimate for employed persons aged 15 to 19 is 500,000. The calculated standard error in this case is 9,000. The standard error is then used to interpret the level estimate of 500,000. For instance, the standard error of 9,000 indicates that:

- There are approximately two chances in three that the real value falls within the range 491,000 to 509,000 ($500,000 \pm 9,000$)
- There are approximately nineteen chances in twenty that the real value falls within the range 482,000 to 518,000 ($500,000 \pm 18,000$).

The real value in this case is the result we would obtain if we could enumerate the total population.

The following tables show the standard errors for this month's level estimates.

	EMPLOYED.....			UNEMPLOYED.....			Labour force	Not in labour force	Unemployment rate	Participation rate
	Full time	Part time	Total	Looking for f/t work	Looking for p/t work	Total				
	'000	'000	'000	'000	'000	'000				
NSW	14.6	9.9	16.1	6.0	3.3	6.5	16.5	14.1	0.2	0.3
Vic.	12.1	8.5	13.4	5.2	3.0	5.7	13.8	11.5	0.2	0.4
Qld	9.4	6.6	10.5	4.0	2.3	4.4	10.9	8.8	0.2	0.4
SA	5.1	3.6	5.7	2.4	1.3	2.6	5.9	5.1	0.4	0.5
WA	6.4	4.5	7.1	2.5	1.4	2.7	7.3	5.7	0.3	0.5
Tas.	1.7	1.4	1.8	0.9	0.5	1.0	1.9	1.7	0.4	0.5
NT	2.1	1.1	2.3	0.5	0.3	0.6	2.3	1.6	0.6	1.8
ACT	1.6	1.1	1.8	0.6	0.4	0.7	1.9	1.3	0.4	0.8
Males	19.9	9.7	20.8	8.0	3.6	8.5	21.4	15.2	0.2	0.3
Females	15.5	14.2	19.0	6.4	4.5	7.4	19.5	18.5	0.2	0.3
Persons	22.8	15.9	25.2	9.6	5.5	10.5	25.9	21.6	0.1	0.2

	NUMBER OF UNEMPLOYED PERSONS.....					UNEMPLOYMENT RATE.....				
	Aged 15-19 looking for f/t work	Aged 20 and over looking for f/t work	Total looking for f/t work	Looking for p/t work	Total	Aged 15-19 looking for f/t work	Aged 20 and over looking for f/t work	Total looking for f/t work	Looking for p/t work	Total
	'000	'000	'000	'000	'000	pts	pts	pts	pts	pts
NSW	2.9	5.6	6.0	3.3	6.5	2.7	0.3	0.3	0.5	0.2
Vic.	2.1	4.9	5.2	3.0	5.7	3.7	0.3	0.3	0.5	0.2
Qld	1.7	3.8	4.0	2.3	4.4	2.8	0.3	0.3	0.5	0.2
SA	1.1	2.2	2.4	1.3	2.6	4.6	0.5	0.5	0.7	0.4
WA	1.1	2.3	2.5	1.4	2.7	3.2	0.3	0.4	0.6	0.3
Tas.	0.4	0.9	0.9	0.5	1.0	4.7	0.6	0.6	0.8	0.4
NT	0.2	0.5	0.5	0.3	0.6	6.0	0.6	0.7	1.7	0.6
ACT	0.3	0.5	0.6	0.4	0.7	8.7	0.4	0.5	1.0	0.4
Males	3.4	7.6	8.0	3.6	8.5	1.7	0.2	0.2	0.5	0.2
Females	2.9	5.9	6.4	4.5	7.4	2.7	0.3	0.3	0.3	0.2
Persons	4.3	9.0	9.6	5.5	10.5	1.4	0.1	0.1	0.2	0.1

STANDARD ERRORS *continued*

MOVEMENT ESTIMATES

The following example illustrates how to use the standard error to interpret a movement estimate. Let us say that one month the published level estimate for females employed part time in Australia is 1,387,000; the next month the published level estimate is 1,400,000. The calculated standard error for the movement estimate is 10,600. The standard error is then used to interpret the published movement estimate of 13,000. For instance, the standard error of 10,600 indicates that:

- There are approximately two chances in three that the real movement over the two month period falls within the range 2,400 to 23,600 (13,000 + or - 10,600)
- There are approximately nineteen chances in twenty that the real movement falls within the range -8,200 to 34,200 (13,000 + or - 21,200).

The following tables show the standard errors for this month's movement estimates.

	EMPLOYED.....			UNEMPLOYED.....			Labour force	Not in labour force	Unemployment rate	Participation rate
	Full time	Part time	Total	Looking for f/t work	Looking for p/t work	Total				
	'000	'000	'000	'000	'000	'000				
NSW	11.4	7.5	12.6	4.6	2.9	5.0	12.9	10.9	0.2	0.3
Vic.	8.8	6.1	9.9	3.7	2.4	4.1	10.2	8.3	0.2	0.3
Qld	6.5	4.7	7.3	3.0	2.0	3.2	7.5	6.1	0.2	0.3
SA	3.4	2.5	3.9	1.6	0.9	1.8	4.0	3.5	0.2	0.3
WA	4.6	3.2	5.1	1.9	1.2	2.0	5.3	4.1	0.2	0.4
Tas.	1.5	1.1	1.7	0.7	0.4	0.8	1.8	1.5	0.3	0.5
NT	1.3	0.7	1.4	0.3	0.2	0.4	1.5	1.0	0.4	1.1
ACT	1.2	0.8	1.4	0.5	0.3	0.5	1.4	1.0	0.3	0.6
Males	15.2	7.3	15.9	6.1	3.1	6.4	16.4	11.4	0.1	0.2
Females	11.6	10.6	14.4	4.9	3.9	5.7	14.9	14.0	0.1	0.2
Persons	17.6	11.9	19.7	7.2	4.5	7.9	20.3	16.6	0.1	0.1

	NUMBER OF UNEMPLOYED PERSONS.....					UNEMPLOYMENT RATE.....				
	Aged 15-19 looking for f/t work	Aged 20 and over looking for f/t work	Total looking for f/t work	Looking for p/t work	Total	Aged 15-19 looking for f/t work	Aged 20 and over looking for f/t work	Total looking for f/t work	Looking for p/t work	Total
	'000	'000	'000	'000	'000	pts	pts	pts	pts	pts
NSW	2.4	4.3	4.6	2.9	5.0	2.3	0.2	0.2	0.4	0.2
Vic.	1.8	3.5	3.7	2.4	4.1	2.8	0.2	0.2	0.4	0.2
Qld	1.6	2.8	3.0	2.0	3.2	2.4	0.2	0.2	0.4	0.2
SA	0.8	1.5	1.6	0.9	1.8	3.5	0.3	0.3	0.5	0.2
WA	1.0	1.8	1.9	1.2	2.0	2.8	0.3	0.3	0.5	0.2
Tas.	0.4	0.7	0.7	0.4	0.8	3.7	0.5	0.5	0.7	0.3
NT	0.1	0.3	0.3	0.2	0.4	4.4	0.5	0.5	1.4	0.4
ACT	0.2	0.4	0.5	0.3	0.5	8.1	0.4	0.4	0.8	0.3
Males	2.9	5.8	6.1	3.1	6.4	1.5	0.1	0.1	0.5	0.1
Females	2.5	4.6	4.9	3.9	5.7	2.4	0.2	0.2	0.2	0.1
Persons	3.5	6.8	7.2	4.5	7.9	1.2	0.1	0.1	0.2	0.1

WHAT IF...? REVISIONS TO TREND ESTIMATES

EFFECT OF NEW SEASONALLY ADJUSTED ESTIMATES ON TREND ESTIMATES

Each time new seasonally adjusted estimates become available, trend estimates are revised (see paragraphs 13 and 14 of Explanatory Notes).

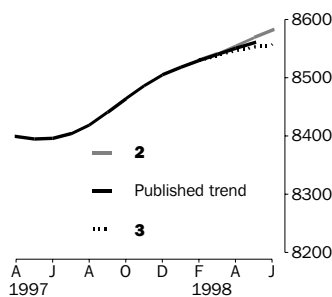
TREND REVISIONS

The examples in the tables below show four illustrative scenarios and the consequent revisions to previous trend estimates of employment and unemployment rate.

- 1** The June seasonally adjusted estimate is the same as the May estimate.
- 2** The June seasonally adjusted estimate is higher than the May estimate by:
 - +0.33% for employment
 - +2.1% for the unemployment rate
- 3** The June seasonally adjusted estimate is lower than the May estimate by:
 - -0.33% for employment
 - -2.1% for the unemployment rate
- 4** The June seasonally adjusted estimate results in a revised May trend estimate which is identical to the new June trend estimate.

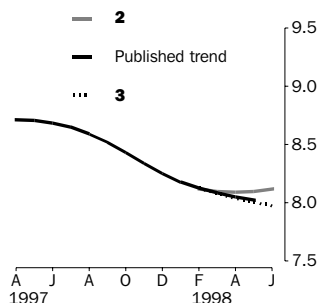
The percentage changes of 0.33% and 2.1% were chosen because they represent the average absolute monthly percentage changes in employment and the unemployment rate respectively.

EMPLOYMENT ('000)



		WHAT IF NEXT MONTH'S SEASONALLY ADJUSTED ESTIMATE IS:			
		1	2	3	4
		8 567.4	8 595.8	8 538.9	8 504.8
		<i>i.e. the same as May 1998</i>	<i>i.e. rises by 0.33%</i>	<i>i.e. falls by 0.33%</i>	<i>i.e. same trend for May & Jun</i>
Trend as PUBLISHED					
1998	March	8 540.2	8 539.9	8 541.1	8 538.6
	April	8 551.1	8 550.8	8 555.0	8 546.6
	May	8 559.4	8 560.7	8 568.7	8 552.8
	June (new)	—	8 569.6	8 581.6	8 557.7

UNEMPLOYMENT RATE (%)



		WHAT IF NEXT MONTH'S SEASONALLY ADJUSTED ESTIMATE IS:			
		1	2	3	4
		8.1	8.3	7.9	8.1
		<i>i.e. the same as May 1998</i>	<i>i.e. rises by 2.1%</i>	<i>i.e. falls by 2.1%</i>	<i>i.e. same trend for May & Jun</i>
Trend as PUBLISHED					
1998	March	8.1	8.1	8.1	8.1
	April	8.0	8.1	8.1	8.0
	May	8.0	8.1	8.1	8.0
	June (new)	—	8.1	8.1	8.0

The ABS publishes a wide range of information on Australia's economic and social conditions. A catalogue of publications and products is available from any of our offices (see below).

INFORMATION CONSULTANCY SERVICES

Information tailored to special needs of clients can be obtained from the Information Consultancy Service available at ABS Offices (see below).

ABS PRODUCTS

A large number of ABS products is available from the ABS Bookshops (see below). The ABS also provides a subscription service – you can telephone the ABS Subscription Service Australia wide toll free on 1300 3663 23.

ELECTRONIC SERVICES

A large range of data is available via on-line services, diskette, magnetic tape, tape cartridge and CD ROM. For more details about our electronic data services, contact any ABS office (see below) or e-mail us at:

- client.services@abs.gov.au

GENERAL SALES AND INQUIRIES

- Sydney 02 9268 4611
 - Melbourne 03 9615 7755
 - Brisbane 07 3222 6351
 - Perth 08 9360 5140
 - Adelaide 08 8237 7400
 - Hobart 03 6222 5800
 - Darwin 08 8943 2111
 - Canberra 02 6252 6627
- Information Services, ABS
PO Box 10, Belconnen ACT 2616



2620200005988

ISSN 1031-038X

RRP \$17.50